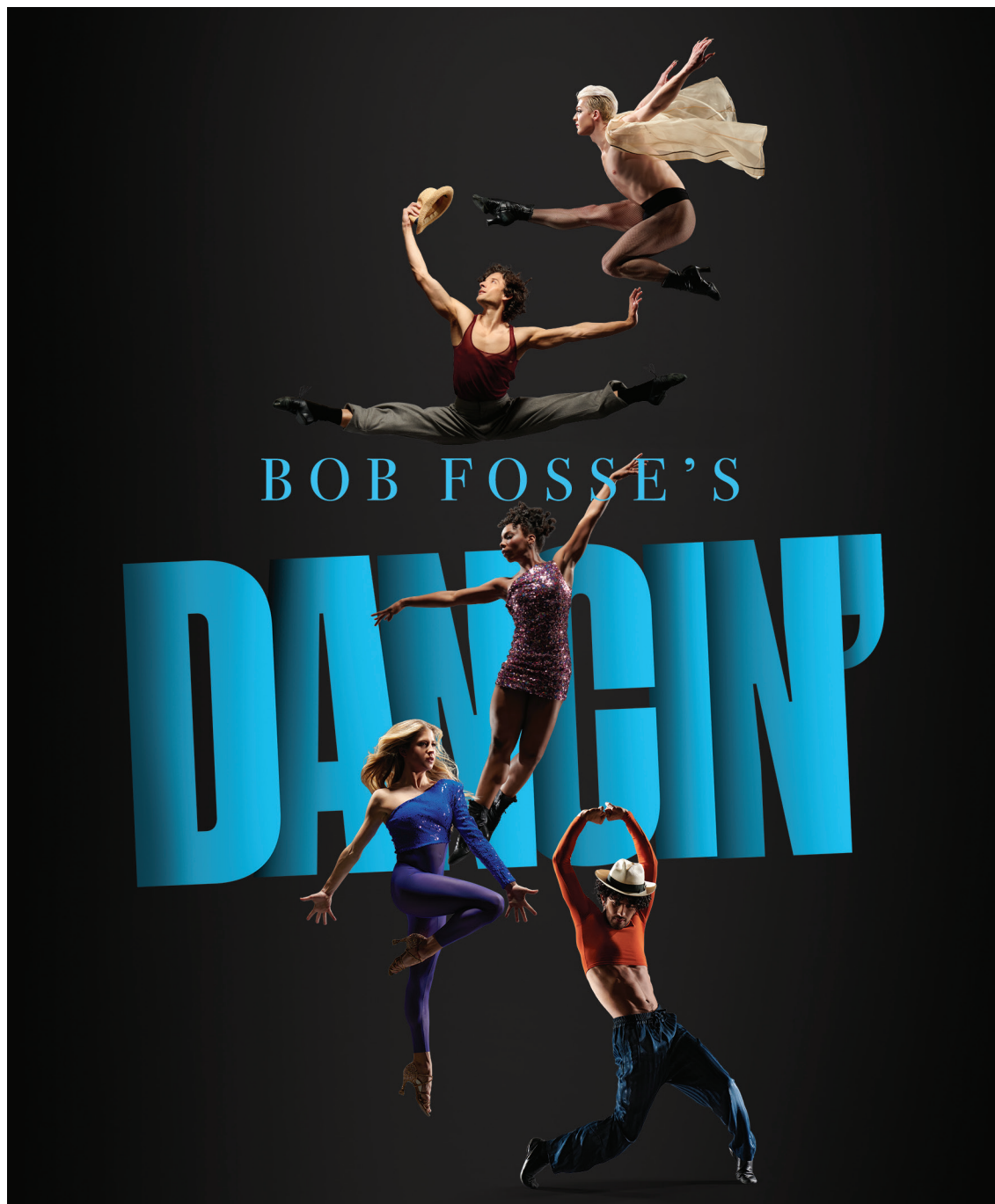


performances

MAGAZINE

THE  LD GLOBE

APRIL – MAY 2022



Welcome to The Old Globe and this production of Bob Fosse's Dancin'. Our goal is to serve all of San Diego and beyond through the art of theatre. Below are the mission and values that drive our work. We thank you for being a crucial part of what we do.

MISSION STATEMENT

The mission of The Old Globe is to preserve, strengthen, and advance American theatre by: creating theatrical experiences of the highest professional standards; producing and presenting works of exceptional merit, designed to reach current and future audiences; ensuring diversity and balance in programming; providing an environment for the growth and education of theatre professionals, audiences, and the community at large.

STATEMENT OF VALUES

The Old Globe believes that theatre matters. Our commitment is to make it matter to more people.

The values that shape this commitment are:

TRANSFORMATION

Theatre cultivates imagination and empathy, enriching our humanity and connecting us to each other by bringing us entertaining experiences, new ideas, and a wide range of stories told from many perspectives.

INCLUSION

The communities of San Diego, in their diversity and their commonality, are welcome and reflected at the Globe. Access for all to our stages and programs expands when we engage audiences in many ways and in many places.

EXCELLENCE

Our dedication to creating exceptional work demands a high standard of achievement in everything we do, on and off the stage.

STABILITY

Our priority every day is to steward a vital, nurturing, and financially secure institution that will thrive for generations.

IMPACT

Our prominence nationally and locally brings with it a responsibility to listen, collaborate, and act with integrity in order to serve.

The Old Globe has embarked on a series of steps to intensify and accelerate necessary change at all levels of our institution. Learn more about this work, including our Social Justice Roadmap, at www.TheOldGlobe.org/Roadmap.

The Theodor and Audrey Geisel Fund provides leadership support for The Old Globe's year-round activities.

BOARD OF DIRECTORS

Evelyn Olson Lamden†
CHAIR

Ann Davies†
IMMEDIATE PAST CHAIR

Paula Powers†
SECRETARY

Anthony S. Thornley†
TREASURER

DIRECTORS			HONORARY DIRECTORS	EMERITUS DIRECTORS
Jules Arthur†	Jennifer Greenfield	Karen L. Sedgwick†	Mrs. Richard C. Adams*	Garet B. Clark
Terry Atkinson†	George C. Guerra†	Jean Shekhter	Clair Burgener*	J. Dallas Clark*
Stephanie R. Bulger, Ph.D.†	Dirk Harris	Timothy J. Shields	Mrs. John H. Fox*	Bea Epstein*
Eleanor Y. Charlton	Nishma Held	Karen Tanz	Audrey S. Geisel*	Sally Furray, R.S.C.J. **
Nicole A. Clay†	Susan Hoehn	Michael Taylor	Paul Harter*	Kathryn Hattox **
Donald L. Cohn†°	Daphne H. Jameson	Rhona Thompson	Gordon Luce*	Bernard Lipinsky*
Ellise Coit	Peter Landin	Christine Roberts	Dolly Poet*	Delza Martin*
Elaine Bennett	Sheila Lipinsky	Trimble	Deborah Szekeley	Conrad Prebys*
Darwin†°	Keven Lippert	Evelyn Mack Truitt	Hon. Pete Wilson	Darlene Marcos Shiley
George S. Davis	Judy McMorrow	Debra Turner		Patsy Shumway
Mark Delfino†	Monica Medina	Pamela J. Wagner		Harvey P. White°
Silvija Devine	Ryan K. Nelson	Reneé Wailes		Carolyn Yorston-Wellcome*
Barry Edelstein	Noelle Norton, Ph.D.	Sheryl White†°		
Pamela A. Farr†	David Jay Ohanian	Margarita Wilkinson		
Robert Foxworth	Deirdra Price, Ph.D.	Karin Winner†		
Harold W. Fuson Jr.†°	Sandra Redman	Vicki L. Zeiger†°		
	Sue Sanderson†			

†Executive Committee member

°Past Chair

*In memoriam

RESIDENT ARTISTS

Patricia McGregor	David Israel Reynoso	Delicia Turner Sonnenberg	James Vásquez
-------------------	----------------------	---------------------------	---------------

COMMISSIONED ARTISTS

Ngozi Anyanwu	Dea Hurston	Jonathan Mello	Delicia Turner Sonnenberg
Chad Beckim	Justin Levine	Tony Meneses	Miki Vale
Inda Craig-Galvan	Melinda Lopez	Liza Jessie Peterson	James Vásquez
Justin Emeka	Donja R. Love	Mansa Ra	Whitney White
Nathan Englander	Mona Mansour	Heather Raffo	Craig Wright
Fiasco Theatre	Laura Marks	Steve Rosen and	Karen Zacarias
José Cruz Gonzáles	Patricia McGregor	Gordon Greenberg	
Jessica Hilt	Johanna McKeon	Tori Sampson	

ASSOCIATE ARTISTS

In recognition of their unique contribution to the growth of The Old Globe and their special talent, we take great pride and pleasure in acknowledging as Associate Artists the following individuals who have repeatedly demonstrated, by their active presence on our stages and in our shops, that wherever else they may work, they remain the heart and soul of the Globe.

William Anton	Ralph Funicello	John McLain	David F. Segal
Gregg Barnes	Lillian Garrett-Groag	Jonathan McMurtry*	Richard Seger*
Jacqueline Brookes*	Harry Groener	Stephen Metcalfe	Diane Sinor*
Lewis Brown*	A.R. Gurney*	Robert Morgan	Don Sparks
Victor Buono*	Joseph Hardy	Patrick Page	David Ogden Stiers*
Wayland Capwell*	Mark Harelik	Ellis Rabb*	Conrad Susa*
Kandis Chappell	Bob James	Steve Rankin	Deborah Taylor
Eric Christmas*	Charles Janasz	William Roesch*	Irene Tedrow*
Patricia Conolly	Peggy Kellner*	Robin Pearson Rose	Sada Thompson*
George Deloy	Tom Lacy	Marion Ross	Paxton Whitehead
Tim Donoghue	Diana Maddox	Steven Rubin	James Winker
Richard Easton*	Nicholas Martin*	Ken Ruta	Robert Wojewodski
Tovah Feldshuh	Dakin Matthews	Douglas W. Schmidt	G. Wood*
Monique Fowler	Deborah May	Seret Scott	
Robert Foxworth	Katherine McGrath*	Richard Seer	

*In memoriam

FROM BARRY

One of my earliest memories of musical theatre revolves around Bob Fosse. I grew up in the suburbs of New York City where Broadway was—and still is—everywhere. It's on the radio and in the papers, in magazine ads and on billboards. It's on TV, too, and that's my Fosse memory: a commercial for his great musical *Pippin*. You can find it on YouTube: the great Ben Vereen and others dance with tremendous precision, beauty, and physical power. A wry voice intones that this “free minute” is just a taste of the show, and that you can feast on the remaining 100 minutes, “without commercial interruption,” by simply buying a ticket.

I couldn't have been more than six or seven years old. But something about this commercial made an impression. I didn't know at the time that it was the very first television commercial ever made for a Broadway show—just one of Fosse's many innovations—but even in my innocence I could sense something special in the way the dancers moved and the way the lighting and photography looked. Fosse was bringing Broadway to places it had never been before ... including the Fair Lawn, New Jersey, living room of a stagestruck seven-year-old boy.

There are precious few artists who revolutionized their art as thoroughly as Bob Fosse did the musical theatre. Even a brief list of his transformations is stunning: his infusion of searing sexual energy into Broadway choreography, the athleticism of his movement and the total emotional commitment it demands of his dancers, his melding of vaudeville comedy with the rhythmic and physical vocabularies of jazz, his insistence that every member of a dance ensemble be distinctly individual. All of this combined into a style that's uniquely his, that's immediately recognizable as Fosse. As if his remaking of dance onstage weren't enough, Fosse also changed forever the way dance was filmed. Marshalling unexpected camera angles and radical editing techniques, he brought viewers into an unprecedented proximity to dance. Every music video we watch today, and every Broadway dance number we see, can trace their roots to Fosse's pioneering imagination.

Fosse's creative impulse reached its apotheosis in 1978 with *Dancin'*. (This show, too, had a famous TV commercial!) A megahit that was a precursor of today's Broadway juggernauts, *Dancin'* was a collection of vignettes exploring the human condition through dance, and it was the definitive and comprehensive expression of one of

the most bracing, original, and distinctive choreographic visions ever. It was also a product of its time. Fosse was the quintessential New York man of the '70s, obsessed in particular with the collisions of sexuality and glamour and power that sparked so much energy in that span-gled, blow-dried, Studio 54 era. Viewed from our moment, some of *Dancin'* seems like a period piece.

That's where the brilliance of Wayne Cilento comes in. Himself an heir to Fosse—he danced in the original production of this show (you can see him leaping astonishingly high in that 1978 commercial)—Wayne is also one of our era's preeminent Broadway choreographers. Re-examining a work that meant so much to his career, he has not so much blown the dust off of it as polished it to a new shine. Bringing Fosse's choreography alive again through a meticulous process of archival reconstruction, Wayne has also coaxed it forward four decades. He asked what Fosse might have made if he were working today, and with his collaborators, especially playwright Kirsten Childs, Wayne has reimaged some parts of *Dancin'* through the lens of 2022. The result is not only a celebration of Fosse's groundbreaking talent, but also a vibrant statement of what dance in the theatre can mean right now. Watching it, I feel a remarkable dual consciousness: Broadway 1978 in direct conversation with Broadway 2022. It's a magical sensation.

The dancing in *Dancin'* is the main event, of course, and it's breathtaking. The Globe has a long history of celebrating dance in musical theatre, and this show and its brilliant and thrilling cast of today's top Broadway dancers bring dance in San Diego to a new height. We are so grateful to Wayne, his creative team, and these dancer-singer-actor-performers for bringing this glorious work here, and we're also happy to extend our relationship with the Tony Award-winning producer Joey Parnes, here partnering with us for the fifth time. Thanks to all of them, the spirit of Bob Fosse is in our house. And it confers on our jangled, post-pandemic world a much-needed jolt of raucous, beautiful, and life-affirming genius.

Thanks for coming. Enjoy the show.



Any feedback on tonight's show or any of the Globe's work?
Email Barry at HiBarry@TheOldGlobe.org and he'll get back to you!

Barry Edelstein
ERNA FINCI VITERBI ARTISTIC DIRECTOR

Timothy J. Shields
AUDREY S. GEISEL MANAGING DIRECTOR

PRESENTS

BOB FOSSE'S DANCIN'

ORIGINAL BROADWAY PRODUCTION CREATED, DIRECTED AND CHOREOGRAPHED BY
BOB FOSSE

Produced in cooperation with Nicole Fosse.

Robert Brill Reid Bartelme and Harriet Jung David Grill Peter Hylenski Finn Ross
SCENIC DESIGN COSTUME DESIGN LIGHTING DESIGN SOUND DESIGN VIDEO DESIGN

Jim Abbott
ORCHESTRATIONS, MUSIC
SUPERVISION, VOCAL AND
INCIDENTAL MUSIC ARRANGEMENTS

Darryl Archibald
MUSIC DIRECTOR

David Dabbon
DANCE ARRANGEMENTS AND
ADDITIONAL MUSIC

Tara Rubin Casting
CASTING

Beverly Jenkins
PRODUCTION STAGE MANAGER

Christine Colby Jacques
REPRODUCTION OF
MR. FOSSE'S CHOREOGRAPHY

Corinne McFadden Herrera
ASSOCIATE DIRECTOR/MUSICAL
STAGER AND ADDITIONAL
CHOREOGRAPHIC RECONSTRUCTION

Kirsten Childs
TEXT CONSULTANT AND
ADDITIONAL MATERIAL

CHOREOGRAPHY BY
BOB FOSSE
DIRECTION AND MUSICAL STAGING BY
WAYNE CILENTO

Produced by special arrangement with Joey Parnes.

Donald and Darlene Shiley Stage
Old Globe Theatre
Conrad Prebys Theatre Center

April 19 – May 29, 2022

THE COMPANY
(in alphabetical order)

Ioana Alfonso
Yeman Brown
Peter John Chursin
Dylis Croman
Tony d'Alelio
Jōvan Dansberry
Karli Dinardo
Ashley Blair Fitzgerald
Jacob Guzman
Manuel Herrera

Gabriel Hyman
Kolton Krouse
Mattie Love
Krystal Mackie
Yani Marin
Nando Morland
Khor Michelle Petinaud
Ida Saki
Michaeljon Slinger
Ron Todorowski

Assistant Stage Manager Heather Hogan
Assistant Stage Manager Amanda Salmons

There will be one 15-minute intermission.

PRODUCTION STAFF

Assistant Musical Stager/
Additional Choreographic Reconstruction Lauren Cannon
Associate Music Director Justin Hornback
Associate Conductor John Gentry Tennyson
Associate Scenic Design Justin Humphres
Assistant Scenic Design Miranda Friel
Assistant Scenic Design Eileen McCann
Associate Costume Design Sue Makkoo
Associate Costume Design Charlotte Devaux
Assistant Costume Design Jess Gerz
Associate Lighting Design Benjamin Travis
Moving Light Programmer Paul Sonnlitner
Associate Sound Design Dan Miele
Associate Video Design Daniel Vatsky
Video Programmer Zach Peletz
Video Engineer Daniel Mueller
Video Animator Ann Slote
Music Assistant Joe Badion
Music Assistant Jared Lee
Physical Therapist Christie Hendry
COVID-19 Safety Supervisor Jakob W. Plummer
Choreographic Reconstruction Assistants Connor Coughlin, Yuka Notsuka
Dance Captain Ashley Blair Fitzgerald
Production Assistants Matt Balfour, Alexander Montoya
Stage Management Interns Amber Gebert-Goldsmith, Jazmine Kennedy-Bizup

The Actors and Stage Managers employed in this production are members of Actors' Equity Association,
the union of Professional Actors and Stage Managers in the United States.

Si desea una sinopsis de esta obra en Español o en Inglés, favor de pedirselo al acomodador que le entregó este programa.
If you would like a synopsis of this production in English or Spanish, please request it from an usher.

BACK IN THE SPOTLIGHT

Director and musical stager Wayne Cilento talks about bringing Bob Fosse's exuberant work to life onstage—and introducing him to a whole new generation.

Interview by Danielle Mages Amato

What's your history with *Dancin'*?

I performed in the show 45 years ago. I almost didn't do it because I was doing *The Act* with Liza Minelli, so I missed the auditions. But then choreographer Graciela Daniele set up a private audition for me. It was the easiest, most relaxed audition I ever had. Bob was such a smart, charismatic man. I think that's why he was such a good director—because he relaxed the atmosphere, and you could let go, without it being so stressful. I later found out that he actually had private auditions for everybody. I thought it was just me!

What was the impact of *Dancin'* when the show premiered? And what was the experience of performing in it?

It was the first time anything like that had ever happened, a dance concert for Broadway in that format. Yes, *A Chorus Line* was about dancers, but Bob took it a step forward. It was just 16 featured dancers, doing all styles of dance, which was very bold. As a dancer, he gave me everything I could possibly want to do in the show. And after all of that, getting a Tony nomination for it was beyond anything I could have hoped for. It was a great experience.

I had an opportunity to do one other show with Bob, several years later. I was heavily into choreographing myself at that point, but Bob called me up and said, "Wayne, I'm doing this new show on Broadway, *Big Deal*. Do you want to do it with me?" I said, "Absolutely," and I dropped everything. It had been maybe eight years since *Dancin'*, and Bob had done film work during those years as a director/choreographer, and his style had changed. The combination of scene work, music, choreography—everything was integrated and blended, as if he were creating cross-fades and other film techniques. *Dancin'* had an almost vaudevillian style, with a lot of beginnings and endings. A dance would end, one of us would come out and do an introduction to the next section, and we'd start that one. But with *Big*



Wayne Cilento. Photo by Mike Hausberg.

Deal, there was none of that. Dance numbers would blend into scenes, then into choreography, then into transitions to other scenes. It was brilliant to watch him do two different styles of work, and I just absorbed and learned so much from him.

What inspired your approach to this revival of *Dancin'*?

There's no way that this show would work if I didn't try to update it and try to bring it into the world of today's generation. The biggest question for me was: if Bob were around today, what would he be doing? My goal was to change the approach of *Dancin'* and use some of that style Bob grew into as a filmmaker, which I saw on *Big Deal*, and to make that style work for this new interpretation of *Dancin'*. Also, there were things in the original that wouldn't work today. It was a different period, a different time. But it still needed to stay edgy, it still needed to keep his wit and sense of humor and his dedication to push the envelope.

What are some of the things that are guiding this production? Is the original choreography still in place?

Yes. Everything is true to what he did. But with numbers like "Crunchy Granola"—that was an old Neil Diamond song that was very popular in the 1970s, and I didn't know if it would work today—I thought: I could pick another rock-and-roll song and set Bob's choreography to it. But that wouldn't be *Dancin'*. So what we're doing is updating the orchestrations with different instrumentation, to give it the sound of today. That changes it, and even though Bob's choreography stays consistent, it doesn't feel dated. It has a new feel and a new energy.

Do the dancers of today, and the way they embody the choreography, make a difference in how it's expressed?

I think this company we've put together is so young and eccentric and unique, kind of like our original company: we were all very different dancers at different points of our careers. These young dancers truly revitalize Bob's work. As the director, I'm not being meticulous about every single thing. I think the mistake some people have made with Bob's work in the past has been to make it too mechanical, in the sense that every move is completely isolated and stylized and specific. It becomes about exact shoulder angles and eye lines and finger movement. I'm teaching our company the steps, and I'm giving the dancers the freedom to interpret them in the way they dance. That's what Bob did for us in the original company. If things look wrong to me, I will approach it, but otherwise, I'm letting the dancers dance. I think just that alone is lifting up Bob's work.

Would you talk a little bit about Kirsten Childs and her role in updating the script?

The perfect thing about Kirsten is she was actually in *Dancin'* as a performer—at the end of the run, so we weren't in the show at the same time. And because both of us love Bob so completely and respect him so much, she was the perfect person for this. There was a lot of stuff that we needed to address in the dialogue, and numbers like "Bojangles" had some issues with clarity. We have stayed very true to the structure and almost everything Bob did, but there were things we needed to adjust, and we did. I think if I brought in another writer who didn't really know Bob, or didn't experience Bob the way we did, it would not have worked out as well as it did.

What should audiences expect coming into the show?

I think people who know *Dancin'* the way it was will either be very excited about what they're going to see, or they'll hate it. We've recreated some pieces from other parts of his career: *Sweet Charity*, *Pippin*, *The Little Prince*, *My Sister Eileen*. It's kind of like telling his journey as a choreographer. I think at the end of it, we get a better picture of who he was as an artist and a human being. And I hope new people discover his choreography in person for the first time. ■



The cast of Bob Fosse's *Dancin'* in rehearsals. Photos by Julieta Cervantes.





THE LIFE OF BOB FOSSE

Born in Chicago, Bob Fosse began dancing at nine, and made his first professional appearance at 13 with his childhood friend Charles Grass under the name The Riff Brothers (1940). The United States Navy then claimed his talents, and he served in the Pacific Islands. Following Fosse's discharge he toured in *Call Me Mister* (1947) with Mary Ann Niles. As a team they were the hit dancers who sparked *Make Mine Manhattan* (1948) and *Dance Me a Song* (1950). After appearing in the MGM films *Give a Girl a Break*, *The Affairs of Dobie Gillis*, and *Kiss Me, Kate* (all in 1953), Fosse departed Hollywood for the musical stage.

Fosse's first of eight Tony Awards was for his choreography in *Pajama Game* (1954), which features his unforgettable number "Steam Heat." Fosse's fame as a choreographer continued to grow with his achievements in *Damn Yankees* (1955, Tony Award), where he met his lifelong partner and collaborator, Gwen Verdon. Fosse went on to choreograph *Bells Are Ringing* (1956, Tony nomination) and *New Girl in Town* (1958, Tony nomination). He directed and choreographed *Redhead* (1959, Tony Award), starring Verdon; staged the musical numbers for the Pulitzer Prize-winning *How to Succeed in Business Without Really Trying* (1961); and co-directed and staged the musical numbers for *Little Me* (1962, Tony Award). During rehearsals for *Little Me*, Fosse withheld his services in support of the Society of Stage Directors and Choreographers until Broadway producers agreed to recognize SSD&C as his collective bargaining agent. Additionally, he conceived, directed, and choreographed *Sweet Charity* (1966, Tony Award), starring Verdon in her signature role, Charity Hope Valentine; *Chicago* (1975, Tony nomination), starring Verdon; and *Dancin'* (1978, Tony Award).

Bob Fosse became, in 1973, the first director in history to win an Academy Award, Tony Award, and Emmy Awards in a single year, for his spectacular triumphs in the film version of *Cabaret*, the Broadway musical *Pippin*, and the NBC television special *Liza with a Z*, respectively.

Fosse also conceived, directed, and choreographed the film version of the Broadway musical *Sweet Charity* (1969), starring Shirley MacLaine. He choreographed and appeared in the motion picture version of *My Sister Eileen* (1955). For the screen he also choreographed *The Pajama Game* (1957) as well as *Damn Yankees* (1958), in which he danced with Verdon. In addition, Fosse's "Manson Trio" from the Tony-winning hit *Pippin* (1973) was the first television commercial for a Broadway show, which he also directed. Fosse was nominated for Academy Awards as Best Director for *Lenny* (1974) and *All That Jazz* (1979), the latter of which won the Cannes Film Festival Palme d'Or, and he directed *Star 80* (1983) for the screen as well. Fosse's writing credits include the book for *Chicago* with Fred Ebb (1975, Tony nomination), the screenplay for *All That Jazz* with Robert Alan Arthur (1979, Academy Award nomination) and the screenplay for *Star 80* (1983). Fosse directed and choreographed the revival of *Sweet Charity* starring Debbie Allen, which joined *Big Deal* (1986, Tony Award) on Broadway in April 1986.

His last performing engagements were with New York City Center, dancing the title role in their revival of *Pal Joey* (1963), and onscreen dancing the role of The Snake in Stanley Donen's musical fantasy *The Little Prince* (1974). On opening night of the national tour of *Sweet Charity* in Washington DC (September 23, 1987), Bob Fosse passed away.

Fosse's imprint exists long after his death, such as in the revival of *Chicago* (1996), *Fosse* (1999), the Emmy Award-winning FX series *Fosse/Verdon* (2019), and the trio of dances *Sweet Gwen Suite* (2021). Fosse's work continues today with the creation of The Verdon Fosse Legacy, founded by his daughter, Nicole Providence Fosse. The Legacy's mission is to promote, preserve, and protect the artistic and intellectual property of Bob Fosse and Gwen Verdon, whose indelible influences can be seen across pop culture today. ■

A New Kind of Musical

A Brief History of Bob Fosse's *Dancin'*

By Danielle Mages Amato

"I have no interest wasting time and energy doing traditional musicals. I like fooling with new forms, seeing what rules I can break if I push a little harder in different directions."

—Bob Fosse, 1978

Bob Fosse's *Dancin'* originally opened on Broadway on March 27, 1978, where it ran for more than four years and nearly 1,800 performances. "The aim," wrote a *Variety* reporter in a 1977 article announcing the show, "is to create an entirely new kind of theatrical performance." It would be the production his later chroniclers would call "pure Fosse, a genre into himself" (Kevin Winkler) and "an autobiography of style" (Sam Wasson).

In collaboration with music director Gordon Harrell, Fosse built an eclectic evening of pre-existing songs that ran the gamut from Johann Sebastian Bach to Neil Diamond to Oscar Hammerstein. In lieu of a traditional book, it featured only sparse dialogue and spoken introductions to some of the numbers, some of which were written by playwrights Herb Gardner and Paddy Chayefsky.

So when it came time for rehearsals, Fosse had no writer, no composer, no lyricist, and no director to negotiate with—just himself and the dancers he handpicked for the show. For *Dancin'*, Fosse selected a company based not only on talent, but also on personality and charisma. He jettisoned the usual division between a chorus hired at a lower rate of pay and a small group of principal dancers who earned more. Instead he put together something truly unusual: an entire company of principal dancers.

The show they created was an endurance marathon that pushed the dancers to their limits. "It's like playing Monday night football eight times a week," Fosse said. "It's really tough on the dancers. We have a cast of 16 with about eight backup people. That's an extraordinary number of backups, and we need them all." The range of styles—tap, jazz, ballet, soft-shoe—and the unrelenting pace of the show gave *Dancin'* its high-energy appeal, while also making it incredibly challenging to perform.



Wayne Cilento (bottom right) and the original cast of *Dancin'* with Bob Fosse (center).

When *Dancin'* finally made its Broadway bow, critics seemed puzzled by Fosse's unprecedented creation. Reviews were mixed at best. But everything the critics questioned about *Dancin'* turned out to be its strengths at the box office. Was there no traditional book to hold the show together? Then it was perfect for tourists to New York who spoke little English. Were there too many styles of dance all crowded into one show? Then *Dancin'* included numbers that would appeal to any audience. Did *Dancin'* include too much sexuality, too much movement, too much action? Then that was exactly what audiences came to see. Because come they did. *Dancin'* became an unqualified box office success. In the end, it would be Fosse's second-longest-running show of all time, behind only *Pippin*. And after it closed on Broadway, *Dancin'* took off on two national tours, along with runs by international companies.

"This show is about the sheer joy of dancing," Fosse said. That joy reverberates through the decades, invigorating this, the first-ever revival of *Dancin'*. ■

1978 TONY AWARD NOMINATIONS

(winners marked with an asterisk)



* Best Choreography (Bob Fosse)

* Best Lighting Design (Jules Fisher)

Best Musical

Best Direction of a Musical (Bob Fosse)

Best Featured Actor in a Musical (Wayne Cilento)

Best Featured Actress in a Musical (Ann Reinking)

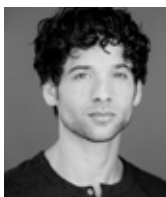
Best Costume Design (Willa Kim)

**IOANA ALFONSO**

(The Company) Broadway: *Wicked* (OBC), *9 to 5* (Maria; OBC). Film/television: *In the Heights*, *The Binge*, "Orange Is the New Black," "Broad City," "Nurse Jackie," "Smash," "The Big C," "Law & Order: SVU," *Across the Universe*, *Isn't It Romantic*, *Winter's Tale*, *The Wackness*. Off Broadway: *Bare* (Vanessa), *La Llorona* (Irma; world premiere). National tours/regional: Twyla Tharp's *Come Fly Away* (Slim), *Saturday Night Fever* (Shirley, u/s Maria), *Golden Boy* (featured ensemble). Associate director/choreographer: *American Son* (Broadway), *Holler If Ya Hear Me* (Broadway), *The Wiz Live!* (NBC), *Hairspray Live!* (NBC), *Bare* (Off Broadway), *Smart People* (Off Broadway), Mia Michaels (multiple projects). ioanaalfonso.com.

**YEMAN BROWN**

(The Company) (he/they) Broadway: swing, dance captain in *Jagged Little Pill*. Regional theatre: *Alien/Nation* (Williamstown Theatre), *Jagged Little Pill* (ART). Off Broadway: *As Much I Can* (movement direction; Public). Music videos: "Woman" by Jonas Brothers, "Drowning" by Amanda Palmer. Concert dance: Reggie Wilson, Raja Feather Kelly, Stefanie Batten Bland, Kristin Sudeikis, Ralph Lemon. Honors: *Dance Magazine's* "25 to Watch," Bessie Award nomination. Education: B.F.A. in Dance from Florida State University. @brownyeman.

**PETER JOHN CHURSIN**

(The Company) Broadway: *King Kong: Alive on Broadway*, *Wicked* (Chistry, Broadway, LA, first national tour), *On the Town*, *West Side Story* revival. Off Broadway: *Brigadoon* (NY City Center), *Nikolai and the Others* (LCT). Regional: *Jerome Robbins' Broadway*, *West Side Story* (Muny), Tommy Dijlas in *The Music Man* (TUTS). Television: *Halston*, Christopher Chadman in *Fosse/Verdon*, "Dancing with the Stars," *Flesh and Bone*, "America's Got Talent." Dance company: Twyla Tharp Dance, Complexions Contemporary Ballet, Barak Ballet. @pjchursin.

**DYLIS CROMAN**

(The Company) The Old Globe: *Dancing in the Dark*. Broadway: *Chicago* (Roxie Hart), *A Chorus Line* (standby Cassie/Sheila), *Sweet Charity* (Rosie, u/s Charity), *Oklahoma!*, *Thou Shalt Not* (u/s Thérèse Raquin), *Fosse* (trumpet solo, filmed for PBS's "Great Performances: Dance in America"). National tours: *Movin' Out* (Brenda), *Chicago* (Roxie Hart), *Thoroughly Modern Millie*, *Applause*.

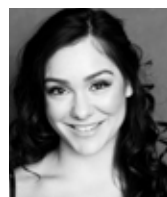
New York Stage and Film: *In Your Arms*. Concert dance: The Feld Ballet. Television: "Guiding Light" (Andrea Daniels), "Smash" on NBC. @dycro33 on Instagram.

**TONY D'ALELIO**

(The Company) Off Broadway: *This Ain't No Disco* (Atlantic). National tours: Mungojerrie in Andy Blankenbuehler's *Cats* revival, Michael Wormwood in *Matilda*, Angel in *Kinky Boots*, LeFou in *Beauty and the Beast*. Regional: *Cats*, *Matilda* (The Kennedy Center), *South Pacific* (Maltz Jupiter Theatre), *La Cage* (The Wick), *Gypsy* (Harbor Lights Theater Company). Film: *Cyberlesque* (as director), *Mishandled* directed by Samantha Marie Ware (as choreographer). Web series: "Daydream" directed by Joey the Alchemist, "PennyWildWednesdays." @tonydalelio.

**JÖVAN DANSBERRY**

(The Company) Broadway: *King Kong* (King's Company, OBC). The Metropolitan Opera: *Fire Shut Up in My Bones*, *Porgy and Bess*, *La Traviata*. Television/live performance: "Saturday Night Live," "The Tonight Show with Jimmy Fallon," "The Tony Awards," "Dancing with the Stars," "Pose," "Macy's Thanksgiving Day Parade," Target, Hermès, Swarovski. Theatre: *I Married an Angel* (City Center Encores!), *Memphis* (Riverside Theatre), *Hairspray* (Dallas Theater Center). Honors: Chita Rivera Award for Outstanding Ensemble, Outer Critics Circle Award for Special Achievement. Education: Loyola Marymount University in Los Angeles. @jovan_dansberry.

**KARLI DINARDO**

(The Company) Broadway: Nini understudy, DC, swing in *Moulin Rouge! The Musical!* (OBC). Off Broadway: *Revolution...* (Minetta Lane). Tours: Peggy/Maria understudy, DC, swing in the first national tour of *Hamilton* (OC), Alex Owens in *Flashdance The Musical*. Regional: *West Side Story* (Carnegie Hall), Anita in *West Side Story* (John W. Engeman, Pennsylvania Shakespeare Festival, Orlando Shakespeare Festival), Anita in *West Side Story* (Opera Australia; Helpmann nomination), Phyllis Dale in *42nd Street* (Arts Center of Coastal Carolina), *The Pajama Game* (Gallery Players), *The Music Man* (John W. Engeman). Representation: CESD. @karlidinardo on Instagram.

**ASHLEY BLAIR FITZGERALD**

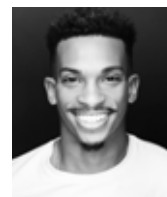
(The Company) Broadway/Off Broadway: *The Cher Show* (Dark Lady, u/s Georgia; 2019 Chita Rivera Award winner), *Trip of Love* (u/s Jennifer), *On the Town* (u/s Ivy), *Gigi*. Tours/regional: *Smokey Joe's Cafe* (Arena Stage), *Come Fly Away* (Helen Hayes nominee), *A Funny Thing Happened on the Way to the Forum*, *Dirty Dancing*, *Dirty Rotten Scoundrels*, *Fosse*. Film/television credits: *Isn't it Romantic*, "Smash," *Company*, "The Tonight Show with Jimmy Fallon," "Last Week Tonight." @ashleyblairfitzgerald.

**JACOB GUZMAN**

(The Company) Broadway: Chino in *West Side Story*, Bottle Dancer in *Fiddler on the Roof*, Sniper in *Newsies*. Tours: dance captain, swing in the first national tour of *Hamilton*. Film/television: Junior/Shark in Steven Spielberg's *West Side Story*, Twin Lost Boy in *Peter Pan Live!*, Mike in the *Newsies* film. Training: The Gold School (dance), Deric Rosenblatt (vocal), Brian Carter (acting). @J_dawg87 on Instagram.

**MANUEL HERRERA**

(The Company) (he/him/his) Broadway: *West Side Story* (2009 revival OBC), *Legally Blonde* (OBC), *Sweet Charity* (2005 revival OBC), *Wicked* (Chistry, OBC), *The Music Man*. Off Broadway/regional: *Bull Durham*, *West Side Story*, *Miss Abigail's Guide*, *The Seven*. Film/television: *I'm Not Gay*, *Either Side of Midnight*, "One Dollar," *Ma*, "Odd Mom Out," "Blue Bloods," "Power," *Winter's Tale*, *Knucklehead*, *Sex and the City 2*, "Smash," "Modern Love." Training: Ted Sluberski (acting), School of American Ballet (The Rudolf Nureyev Foundation Scholarship). @therealmannyherrera on Instagram and TikTok.

**GABRIEL HYMAN**

(The Company) Broadway: *King Kong* (OBC). National tour: *Hamilton* (Phillip Tour). Regional/international: world premiere of *The Prince of Egypt*. Television: "Super Bowl LV Halftime Show" with The Weeknd, "Pose" (FX), "Succession" (HBO). Concert dance: dancer with Ailey II, performed with Jeremy McQueen's The Black Iris Project for Ballet Across America at The Kennedy Center. Honors: Chita Rivera Award (Outstanding Ensemble), Bill and Melinda Gates Millennium Scholar, Gloria Kaufman Dance Scholar. Education: B.F.A. in Dance from The Ailey School/Fordham University at Lincoln Center. @gabehyman.

**KOLTON KROUSE**

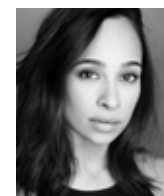
(The Company) Broadway: *Cats*. Regional: *Freddie Falls in Love* (The Joyce). Film/television: *Cats*, *Fosse/Verdon*, "Last Week Tonight with John Oliver." Music videos: "Rebound" by Tayla Parx, "Boo Riley" by Boo Riley. Education: The Juilliard School. @KoltonKrouse on Instagram, Twitter, TikTok.

**MATTIE LOVE**

(The Company) Broadway/New York: *Wicked* (North American tour), *Christmas Spectacular* (Radio City). Television: *Fosse/Verdon*, "Fox's New Year's Eve with Steve Harvey" (as assistant choreographer). Education: B.F.A. from Marymount Manhattan College, Springboard Danse Montréal. @mattildalove_.

**KRYSTAL MACKIE**

(The Company) National tour: *Hamilton*. Off Broadway: *This Ain't No Disco*. Regional: *In the Heights* (Engeman), *After Midnight* (NCL). Education: B.F.A. in Contemporary Dance from UNC School of the Arts. @krystalmackie on Instagram.

**YANI MARIN**

(The Company) The Old Globe: debut. Broadway: *Wicked*, *Women on the Verge of a Nervous Breakdown* (OBC), *West Side Story* (2009 revival OBC). Regional: *Kiss My Aztec* (La Jolla Playhouse, Berkeley Rep), *Hair* (Hollywood Bowl), *Christmas Spectacular* (Radio City). Concerts: *The Beyoncé Experience* (world tour), *A Broadway Celebration at the White House*, *Sondheim! The Birthday Concert*. Television: "The Blacklist," "Tommy," "Jack Ryan," "Empire," "Blue Bloods," "NCIS: LA," "Criminal Minds," "One Bad Choice," "Smash." B.F.A. in Dance from NYU Tisch School of the Arts. @iamyanimarin.

**NANDO MORLAND**

(The Company) Broadway: *West Side Story*. National tour: *Fiddler on the Roof*. Dance companies: Gallim, Madboots Dance, Rashaun + Silas, Stefanie Batten Bland. Music video: "Rare Changes" by Mayer Hawthorne. Honors: *Dance Magazine's* "25 to Watch." Education: B.F.A. in Dance from NYU Tisch. @nandomorland on Instagram.

**KHORI MICHELLE PETINAUD**

(The Company) Broadway: *Aladdin* (OBC), *Moulin Rouge!* (OBC). Tours: *The Color Purple*, *Roman Holiday*. Off Broadway: *Sweet Gwen Suite* (NY City Center), *Freddie Falls in Love* (Signature), *American Dance Machine* (The Joyce). Regional: *Tommy, In the Heights* (Kennedy Center), *Memphis* (TUTS), *Evita* (Flat Rock Playhouse), *Sweet Charity* (Engeman). Film/television: “Marvelous Mrs. Maisel” (season 3, episode 1), *Rent: Live*, “Z: The Beginning of Everything,” “Vinyl,” “The Knick.” Education: B.F.A. in Dance from New York University. @kmr8787 on Instagram.

**IDA SAKI**

(The Company) Film/television: *In the Heights*, *Cats*, *Birds of Paradise*, “ZIWE,” *Halston*. Off Broadway: *Sleep No More* (The McKittrick Hotel), *The Lucky Ones* (Ars Nova), *You’ll Still Call Me by Name* (Jacob’s Pillow). Regional: *The Scarlet Stone* (La Jolla Playhouse). Music videos: “Cry, Cry, Cry” by Coldplay, “Win It” by Lola Kirke, “Stop Making This Hurt” by The Bleachers. Companies: Cedar Lake Contemporary Ballet. Honors: Presidential Scholar in the Arts, *Dance Magazine*’s “25 to Watch,” NFAA YoungArts Modern Dance winner. Education: Booker T. Washington HSPVA, Dance Industry, NYU Tisch School of the Arts.

**MICHAELJON SLINGER**

(The Company) Broadway: *Mrs. Doubtfire*, *Hello, Dolly!* (dance captain), *Matilda*, *Side Show*, *Evita*, *How to Succeed...*, *Billy Elliot* (dance captain), *West Side Story* (dance captain). New York: NY Pops, *Guys and Dolls* (Carnegie Hall). Film/television: *Ted 2*, “Kennedy Center Honors.” Associate choreographer: *Almost Famous* (The Old Globe), *Mrs. Doubtfire* (Broadway), *Merrily We Roll Along* (Roundabout), *La Traviata* (Metropolitan Opera), *Mythic* (London). Training: American Ballet Theatre, The Juilliard School. michaeljonslinger.com, @double_windsor on Twitter and Instagram.

**RON TODOROWSKI**

(The Company) Broadway: *Angels in America*, *Cats*, *Finding Neverland*, *Wicked*, *Come Fly Away*, *Guys and Dolls*, *The Times They Are A-Changin’*, *Movin’ Out* (also National Theatre; Helen Hayes Award for Outstanding Lead Actor), *Footloose*. Off Broadway: *Brigadoon* (City Center), *The Wild Party* (MTC). Dance companies: Twyla Tharp, Complexions, Cedar Lake, David Parsons, Mia Michaels. Film/television: *Winter’s Tale*, “SNL,” “VMAs.” Choreography: *Celestia* (The STRAT; 2019 Best of Las

Vegas Award for Best New Show), *Pride and Prejudice* (Rep of St. Louis), Step One Dance Company (RWS), “AhHa” by Nate Ruess (music video). Associate choreography: Celine Dion’s *A New Day* (Colosseum). Co-owner: The Fête, a production company in upstate New York.

BOB FOSSE

(Original Broadway Production Creator, Director and Choreographer; Choreography) was nominated for 20 Tony Awards and was the first director in history to win the Oscar, the Antoinette Perry (Tony) Award, and Emmy Awards in a single year, for the film version of *Cabaret*, the Broadway musical *Pippin*, and the NBC television special *Liza with a Z*, respectively. Learn more about Fosse and his work on page 8 of this program.

WAYNE CILENTO

(Director and Musical Stager) One of Broadway’s most prolific and honored choreographers. Directed and choreographed *Dream on Broadway*, *Spirit: A Journey in Dance*, *Drums & Song* for PBS, *American Dance Machine*. Won the 1993 Tony Award for Best Choreography for *The Who’s Tommy*. Other Tony nominations: Best Choreography for *Wicked*, *Baby*, *How to Succeed in Business Without Really Trying*, *Dream*, *Sweet Charity*, and Best Featured Actor in a Musical for *Dancin’*. Inspired and originated the role of Mike in Tony Award-winning Best Musical *A Chorus Line*. Resides in Mamaroneck, New York with his wife Cathy.

ROBERT BRILL

(Scenic Design) The Old Globe: *Robin and the 7 Hoods*, *Oleanna*, many others. Broadway: *Ain’t Too Proud: The Life and Times of The Temptations* (Tony nomination), *Thoughts of a Colored Man*, *Summer: The Donna Summer Musical*, *Assassins* (Tony nomination), *Cabaret*, *Jesus Christ Superstar*, *Guys and Dolls* (Tony nomination), *Design for Living*, *Buried Child*, others. Recent credits: *Bhangin’ It* (La Jolla Playhouse), *Frozen* (Disney Creative Entertainment). Opera world premieres: *Moby-Dick*, *Cold Mountain*, *Everest*, *The Manchurian Candidate*. Other: founding member of Sledgehammer Theatre, recipient of the Michael Merritt Award for Excellence in Design and Collaboration, professor of Scenic Design at UC San Diego. robertbrilldesign.com.

HARRIET JUNG AND REID BARTELME

(Costume Design) Design credits: New York City Ballet, American Ballet Theatre, San Francisco Ballet, The National Ballet of Canada, Pacific Northwest Ballet, Grand Théâtre de Genève, Opéra National de Bordeaux, Ballett am Rhein Düsseldorf. Commissions: Museum of Arts and Design in New York, Guggenheim Museum. reidandharriet.com, @reidandharriet on Instagram.

DAVID GRILL

(Lighting Design) Honors: thirteen-time Emmy Award nominee, five-time Primetime Emmy Award winner, 2015 and 2016 Telly Award winner. Dance credits:

works for Milwaukee Ballet, Colorado Ballet, Ballet Met, Kansas City Ballet, Northern Ballet Theatre, numerous choreographers. Television/video: “The Drew Barrymore Show,” New York Philharmonic. Other: lighting direction for the National Memorial Day, July 4th Concerts, over 17 Super Bowl halftime shows. Teaching: associate professor and co-chair of Theatre Design/Technology Program at Purchase College, State University of New York.

PETER HYLENSKI

(Sound Design) Tony Award-winning, Grammy- and Olivier-nominated. The Old Globe: *Almost Famous*, *In Your Arms*. Selected Broadway designs: *Moulin Rouge!*, *Frozen*, *Anastasia*, *Beetlejuice*, *Once on This Island*, *Something Rotten!*, *King Kong*, *Rock of Ages*, *After Midnight*, *Motown*, *The Scottsboro Boys*, *Side Show*, *Rocky*, *Bullets Over Broadway*, *Shrek The Musical*, *On a Clear Day*, *Lend Me a Tenor*, *Elf*. Other: *Le Réve*, *Lake of Dreams* at Wynn Las Vegas. Other: designed for Carnegie Hall, Radio City Music Hall, Madison Square Garden, The Kennedy Center.

FINN ROSS

(Video Design) Honors: two Olivier Awards, one Tony Award, three Drama Desk Awards. Recent work: *Back to the Future*, *Bat out of Hell* (West End), *Anna Karenina* (Joffrey Ballet), *Frozen* (international), *Mean Girls* (Broadway), *Tempest* (RSC), *The Curious Incident of the Dog in the Night-Time* (Broadway, West End), *American Psycho* (Broadway, Almeida), *Mahagonny* (Royal Opera House), *Frankenstein* (Royal Ballet), *Jagged Little Pill* (ART), *Chimerica* (Almeida, West End), *The Death of Klinghoffer*, *Damnation of Faust*, *Magic Flute* (English National Opera), *Master and Margarita*, *All My Sons*, *Shun-kin* (Complicité), *Hansel and Gretel*, *A Dog’s Heart*, *Magic Flute* (Netherlands Opera).

JIM ABBOTT

(Orchestrations, Music Supervision, Vocal and Incidental Music Arrangements) As musical director: *Joseph and the Amazing Technicolor Dreamcoat*, *Rent*, *Aida*, *Bombay Dreams*, *Women on the Verge*, *Tarzan*. As dance arranger: *Tarzan*, *Aida*, *Bombay Dreams*, *Sweet Charity*, *Guys and Dolls*, *Wicked*. As synthesizer design: *Spamalot*, *Avenue Q*, *The Addams Family*, *Big Fish*, *The Prom*, *Something Rotten!* As contributing orchestrations: *Aida*, *Bombay Dreams*, *Wicked*, *The Addams Family*, *On the 20th Century*, *Women on the Verge* (Drama Desk nomination). Other: performances with Aretha Franklin, Dennis DeYoung, Shirley Bassey, Bob Hope, Phil Collins, Elton John; musical supervisor for *Tarzan* international companies and *Disney’s Broadway Hits*, performing with orchestras around the world.

DARRYL ARCHIBALD

(Music Director) Upcoming: *Some Like It Hot* (Broadway, fall 2022), new Angelique Kidjo musical *Yemandjá* (as music supervisor; world tour), *Duke Ellington’s*

Nutcracker (as vocal arrangements/associate music supervisor; tour, fall 2022). Other: *Ragtime* episode of “Encore!” (Disney+), *The Color Purple* (2015 tour, Paper Mill Playhouse), *Motown The Musical* (Broadway 2016), *Wicked* (as substitute conductor; Pantages Theater), *Memphis* (Broadway tour), Disney’s *The Lion King* (as vocal coach/assistant conductor; Broadway tour), *Ragtime*, *Little Shop of Horrors* with Michaela Jaé Rodriguez (Pasadena Playhouse), *Dear World* with Tyne Daly (VPAC), *Passion* (Boston Court), Jonathan Dove’s *Innocence* (Banff Centre), *A Hollywood Holiday Christmas* television special (as dance arrangements and orchestrations). darrylarchibald.com.

DAVID DABBON

(Dance Arrangements and Additional Music) Emmy nomination: “Eat S***, Bob!” for HBO’s “Last Week Tonight with John Oliver” (as composer). Broadway: *Beetlejuice*, *Funny Girl*, *Disaster!* (as dance arranger); *Sondheim on Sondheim* (as additional orchestrations; Grammy nomination). HBO: documentary *Six by Sondheim* (as arranger). Pittsburgh CLO: *Game On* (as composer). Playwrights Horizons: *The Christians* (as music supervisor). NYTW: *Love and Information* (as music director), *The Events* (as music supervisor). Seattle Children’s Theatre: *The Little Prince* (as composer). Wagner College/Northwestern University: *Our New Town* (as composer). Audra McDonald/New York Philharmonic: *Sing Happy*, *Audra McDonald: Go Back Home* (as orchestrator). Education: B.M. from The Hartt School, M.M. from Carnegie Mellon University. @daviddabbon on Instagram.

TARA RUBIN CASTING

(Casting) The Old Globe: *Scrooge*, *Despereaux*, *Gods of Comedy*, *Life After*, *Heart of Rock & Roll*, *Much Ado*, *Tempest*, *Guys and Dolls*, *Othello*, *Two Gentlemen of Verona*, *Dog and Pony*, *Room with a View*, others. Broadway: *Six*, *Ain’t Too Proud*, *King Kong*, *Band’s Visit*, *Summer*, *Prince of Broadway*, *Bandstand*, *Indecent*, *Sunset Boulevard*, *Miss Saigon*, *Dear Evan Hansen*, *Bronx Tale*, *Cats*, *Falsettos*, *Disaster!*, *School of Rock*, *Gigi*, *Bullets Over Broadway*, *Aladdin*, *Les Mis*, *The Heiress*, *How to Succeed...*, *Billy Elliot*, *Shrek*, *Young Frankenstein*, *Mary Poppins*, *Spamalot*, *Spelling Bee*, *The Producers*, *Mamma Mia!*, *Jersey Boys*, *Phantom*. Off Broadway: *Gloria: A Life*, *Smokey Joe’s Cafe*, *Clueless*, *Here Lies Love*, *Love, Loss, and What I Wore*. Regional: McCarter, Yale, La Jolla, Paper Mill, Berkeley, others.

BEVERLY JENKINS

(Production Stage Manager) Awards: 2020 Tony Honors for Excellence in the Theatre. Select Broadway: *Hadestown*, *Summer: The Donna Summer Musical*, *A Bronx Tale The Musical*, *Fully Committed*, *Amazing Grace*, *Living on Love*, *Holler If Ya Hear Me*, *Machinal*, *Godspell*, *Bengal Tiger at the Baghdad Zoo*, *In the Heights*, *Shrek The Musical*, *Avenue Q*, *Aida*, *Sweet Charity*, *Oklahoma!*,

The Lion King, Bring in 'Da Noise, Bring in 'Da Funk, Miss Saigon. Member: board of trustees of Broadway Cares/Equity Fights AIDS, Beyond the Stage Door, D.I.V.A., Inc. Education: Howard University. Other: co-founder of Broadway & Beyond: Access for Stage Managers of Color.

CHRISTINE COLBY JACQUES

(Reproduction of Mr. Fosse's Choreography) Broadway: Bob Fosse's *Dancin'* (OBC), Ursula understudy in *Sweet Charity* (revival OBC). First national tours: Ursula in *Sweet Charity*, Fosse. Rockettes: Radio City Music Hall, tour with Peter Allen. National spokesperson: Danskin, Dame Margot Fonteyn's *The Magic of Dance*. Film: *A Chorus Line, Annie*. Music videos: Billy Joel, Barry Manilow. Television: Plácido Domingo special, "The Tonight Show with Jay Leno," Bob Hope's *Happy Birthday, Bob* special featuring the cast of *Dancin'*. Artist in residence: Stephens College, Interlochen Arts Academy, CCM University of Cincinnati, Wolf Trap Farm Park for the Performing Arts. Education: B.F.A. in Dance from University of Kansas. @cc.jacques on Instagram.

CORINNE MCFADDEN HERRERA

(Associate Director/Musical Stager and Additional Choreographic Reconstruction) As associate choreographer: *Sweet Charity* (2005 Broadway revival), *Wicked* (Broadway) with Wayne Cilento. As co-choreographer: the film *Winter's Tale*. As performer: Broadway's *Sweet Charity*, original Broadway companies of *Aida, Wicked*. Other: Jonas Brothers concert (Radio City). Music videos: Ricky Martin, Limp Bizkit.

KIRSTEN CHILDS

(Text Consultant and Additional Material) (she/her/hers) Theatre: *Fly* (as co-lyricist; La Jolla Playhouse), *The Bubbly Black Girl Sheds Her Chameleon Skin* (Playwrights Horizons; Obie, Kleban, Audelco, Richard Rodgers, Gilman Gonzalez-Falla Awards; Rockefeller, Jonathan Larson Grants; Lortel, NAACP, Drama Desk Award nominations), *Bella: An American Tall Tale* (Playwrights Horizons, Dallas Theater Center; Frederick Loewe Award, Edward M. Kennedy Prize finalist, Audelco Awards), *Miracle Brothers, Family Portraits: Aunt Lillian* (Vineyard Theatre), *Edge of Night* (Playwrights Horizons Soundstage podcast series). Other: Dramatists Guild Council member, professor at NYU Tisch School of the Arts Graduate Musical Theatre Writing Program.

HEATHER HOGAN

(Assistant Stage Manager) Broadway: *In the Heights, On Your Feet! The Story of Emilio & Gloria Estefan, Hamilton, The Ferryman*. Regional: *Carmen, After the Quake* (La Jolla Playhouse), bilingual *Fame* (GALA Hispanic Theatre). International: *Candela* (Pura Vibra), *India* (Dragone), *Oedipus Rex* (SCOT, Japan). Other: stage director and line producer for events and concerts, working with Diana Ross, Lauryn Hill, Daddy Yankee, J Balvin, others.

AMANDA SALMONS

(Assistant Stage Manager) The Old Globe: *The Gardens of Anuncia, Life After, Dr. Seuss's How the Grinch Stole Christmas!, The Blameless, American Mariachi, The Heart of Rock & Roll, October Sky, Rain, The Metromaniacs, The White Snake, Inherit the Wind, Somewhere, Lost in Yonkers, As You Like It, Romeo and Juliet*. Regional: *Blueprints to Freedom: An Ode to Bayard Rustin* (La Jolla Playhouse), *Kiss Me, Kate* (Hartford Stage), *The Foreigner, See How They Run, The Rivalry* (Lamb's Players Theatre), *The Gondoliers, The Pirates of Penzance, Candide, Trial by Jury* (Lyric Opera San Diego). Education: UC San Diego.



BARRY EDELSTEIN

(Erna Finci Viterbi Artistic Director) is a stage director, producer, author, and educator. He has directed nearly half of the Bard's plays. His Globe directing credits include *The Winter's Tale, Othello, The Twenty-seventh Man*, the world premiere of *Rain, Picasso at the Lapin Agile, Hamlet*, and the world premiere of *The Wanderers*. He also directed *All's Well That Ends Well* as the inaugural production of the Globe for All community tour. In January he oversaw the Globe's inaugural Classical Directing Fellowship program. He recently directed *The Tempest* with the Los Angeles Philharmonic at Walt Disney Concert Hall. As Director of the Shakespeare Initiative at The Public Theater (2008–2012), Edelstein oversaw all of the company's Shakespearean productions as well as its educational, community outreach, and artist-training programs. At The Public, he staged the world premiere of *The Twenty-seventh Man, Julius Caesar, The Merchant of Venice, Timon of Athens*, and Steve Martin's *WASP and Other Plays*. He was also Associate Producer of The Public's Broadway production of *The Merchant of Venice* starring Al Pacino. From 1998 to 2003 he was Artistic Director of Classic Stage Company. His book *Thinking Shakespeare*, which was rereleased in a second edition in June, is the standard text on American Shakespearean acting. He is also the author of *Bardisms: Shakespeare for All Occasions*. He is a graduate of Tufts University and the University of Oxford, where he studied as a Rhodes Scholar.



TIMOTHY J. SHIELDS

(Audrey S. Geisel Managing Director) joined The Old Globe as Managing Director in 2017. In his time in San Diego, he has enjoyed becoming involved in the community. He currently serves as a board member of the San Diego Regional Chamber of Commerce's LEAD program; an advisory board member of the San Diego Downtown Partnership; and Vice President of the Balboa Park Cultural Partnership. He brings to San Diego many decades of not-for-profit theatre experience. He was Managing Director of Princeton, New Jersey's McCarter Theatre Center (2009–2017);

Milwaukee Repertory Theater (1998–2009); and Geva Theatre Center in Rochester, New York (1992–1998). He has also held administrative positions at Children's Theatre Company in Minneapolis, Denver Center Theatre Company, and McCarter Theatre Center in an earlier period of his career. He served as President of the League of Resident Theatres and as Vice President of the board at Theatre Communications Group. He has been the Chair of the ArtPride NJ board; a member of Milwaukee's Latino Arts Board; and a board member of the Cultural Alliance of Greater Milwaukee. He holds a B.F.A. in Drama Production from Carnegie-Mellon University in his hometown of Pittsburgh, Pennsylvania.

CASTING

Tara Rubin Casting
Tara Rubin, CSA;
Merri Sugarman, CSA; Laura Schutzel, CSA;
Claire Burke, CSA; Peter Van Dam, CSA;
Felicia Rudolph, CSA; Xavier Rubiano, CSA;
Kevin Metzger-Timson, CSA;
Louis DiPaolo; Spencer Gualdoni

TAKING PHOTOS IN THE THEATRE

Audience members may take photos in the theatre before and after the performance and during intermission. If you post photos on social media or elsewhere, you must credit the production's designers by including the names below.

Robert Brill (Scenic Design)
robertbrilldesign.com

Reid Bartelme and Harriet Jung
(Costume Design)
@reidandharriet, @missharriets, @reidbartelme

David Grill (Lighting Design)

Peter Hylenski (Sound Design)

Finn Ross (Video Design)
@fray_studio

Please note: Photos are strictly prohibited during the performance. Photos of the stage are not permitted if an actor is present. Video recording is not permitted at any time in the theatre.

COVER ARTWORK

(from top) Kolton Krouse, Peter John Chursin,
Khoré Michelle Petinaud, Ashley Blair
Fitzgerald, and Nando Morland.
Photos by Rachel Neville.



This theatre operates under an agreement between the League of Resident Theatres and Actors' Equity Association, the union of professional actors and stage managers in the United States.



The Directors are members of the Society of Stage Directors and Choreographers, an independent national labor union.



This Theatre operates under an Agreement with the International Alliance of Theatrical Stage Employees Local No. 122.



The Scenic, Costume, Lighting and Sound Designers in LORT Theatres are represented by United Scenic Artists Local USA-826, IATSE.



The musicians are represented by the American Federation of Musicians, Local 325 San Diego.

Additional Scenery and Automation:

Showmotion Inc.

Additional Costumes:

Arel Studio Theatrical Costume

Daddy Dalrymple Inc.

Eric Gorsuch

High Society Bespoke

Jill Courtemanche Millinery

LaDuca Productions

Esther Skandunas

Teri Tavares

Worldtone Dance

Additional Properties: BrenBri Props

Additional Lighting: PRG

Additional Sound and Video: Sound Associates

Additional Drums and Percussion:

Pearl Musical Instrument Company

Music Clearances: Linda Osher

Video Clearances: Lisa Savage

Merchandise: Creative Goods

SPECIAL THANKS

Kyle Bonder

Marina Hyson

Larry Morley & Katherine Dumais

Hummingbird Humanity

SpotCo

O&M

Sandahl Bergman

Ken Bloom

Spence Ford

Zelda Pulliam

MAKING THEATRE MATTER TO MORE PEOPLE:

Binational Edition

BY LAURA ZEE

In March 2020, the San Ysidro border crossing closed to nonessential travel. This could have left some binational community members unable to access Globe programs. However, arts engagement programming moved entirely online at the same time. Building artistic, digital programs reduced the relevance of physical borders during a time in history that highlighted the relevance of globe-wide connections.

Now, for the first time ever, The Old Globe’s arts engagement programs are launching in Tijuana in 2022. The international collaborations that sprang up in the digital programming era will continue, starting with two Detrás del Telón theatre design workshop series and the spring Globe for All Tour of *Mala*. First-time partnerships include Tijuana Hace Teatro, a company offering arts programs, performances, and devised community-based theatre, and Centro Cultural Tijuana, a huge cultural hub of free and low-cost programs and presentations of performing and fine arts.

The digital versions of arts engagement programs like Spanish-language design workshop Detrás del Telón, community gathering Breaking Bread, and Mad Libs-inspired collaboration Word Up! were specifically shaped to welcome our neighbors 20 minutes south in Tijuana as collaborators and participants, along with our neighbors stretched across North County, East County, South Bay, and more. The engagement and impact of these programs demonstrated a strong readiness and benefit for community members on both sides of the border to engage with each other through the arts. Now, as programming moves back in person, we continue developing binational partnerships to hold physical space for our Tijuana neighbors, reflecting the digital space that proved so



significant in our mission to make theatre matter to more people.

At the helm of this new development is Valeria Vega, a Tijuana-based, binational, multifaceted theatre artist. Since Valeria joined the Teaching Artist team in 2018, she has crossed the border daily to provide creative experiences and opportunities to community members across San Diego. She advocated for the value of binational programming and laid the groundwork for it, and now leads the exploration of how engagement across the border can support the values and mission of The Old Globe and build partnerships and procedures.

“Every time I crossed the border, I imagined I was bringing these two great cities together, and every back and forth made that feeling stronger,” said Vega. “Now that the giant leap is done, we must continue running and keep uniting humanity through theatre.”

Stay tuned for more information about developing partnerships and opportunities to support this work. ■

Photo by Beto Soto.

SUMMER AT THE GLOBE

THE TAMING OF THE SHREW

By William Shakespeare
Directed by Shana Cooper

Featuring two of the sexiest figures in all of world theatre, Shakespeare’s masterful comedic take on the battle of the sexes turns everything we think about love, marriage, and gender on its head.

June 5 – July 10

FREESTYLE LOVE SUPREME

Conceived by Anthony Veneziale
Created by Thomas Kail, Lin-Manuel Miranda,
and Anthony Veneziale
Directed by Thomas Kail

Before *Hamilton*, before *In the Heights*, there was *Freestyle Love Supreme*. Now—direct from Broadway—the original hip-hop musical improv phenomenon is coming to San Diego!

June 21 – July 10

ON BECKETT

Conceived and performed by Bill Irwin

In this intimate 90-minute evening, Bill Irwin explores a performer’s relationship to Samuel Beckett, mining the physical and verbal skills acquired in his years as a master clown and Tony Award-winning actor.

July 14–17

DIAL M FOR MURDER

By Frederick Knott
Adapted by Jeffrey Hatcher
Directed by Stafford Arima

An edge-of-your-seat, world-premiere adaptation of the celebrated murder mystery that inspired Hitchcock’s masterpiece.

July 21 – August 21

A MIDSUMMER NIGHT’S DREAM

By William Shakespeare
Directed by Patricia McGregor

Filled with magic, humor, music, and spectacle, Shakespeare’s most joyful and popular comedy unfolds in an enchanted forest where anything can, and does, happen!

July 31 – September 4

Learn more at www.TheOldGlobe.org

Join The Old Globe’s Arts Engagement Department for a lineup chock-full of exciting events and learning opportunities. Visit www.TheOldGlobe.org/Arts-Engagement to learn more.

MAY
May 21: Creative Youth Studio: Clowning Workshop with Eric Weiman

A series of professional development opportunities for youth to advance their creative and professional careers.

May 28: Word Up!
A free, fun, and festive Mad Libs-inspired collaboration between audience and artist.

JUNE
June 4: Globe Learning: Clowning in the Classroom with Skyler Sullivan
Professional development opportunities for local theatre makers and educators.

June 18: AXIS/coLAB: Juneteenth Celebration
Sixth annual celebration, in collaboration with the George L. Stevens Senior Center, showcasing performance pieces inspired by the holiday.

JULY
July 16: AXIS: Globe PRIDE
Our annual free AXIS event featuring performances and surprises!



Happy Birthday, Mr. Shakespeare! AXIS event, 2018. Photo by Rich Soublett II.

Dates and details subject to change.

PRODUCTION SPONSORS



TERRY ATKINSON AND
KATHY TAYLOR



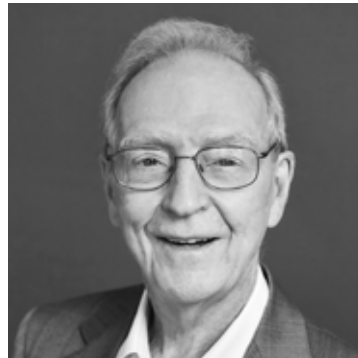
ELIZABETH CUSHMAN



ANN DAVIES



PAMELA FARR AND
BUFORD ALEXANDER



DEE E. SILVER, M.D.



PAMELA J. WAGNER
AND HANS TEGEBO



THE ESTATE OF
CAROLYN
YORSTON-WELLCOME

UNITED 

ARTIST SPONSORS

FOR ROBERT BRILL (SCENIC DESIGN)
GAIL AND DOUG HUTCHESON

FOR WAYNE CILENTO (DIRECTOR)
PHILIP AND MARGARITA WILKINSON

FOR REID BARTELME AND HARRIET JUNG (COSTUME DESIGN)



REMEMBERING CAROLYN YORSTON-WELLCOME 1922-2021



Carolyn Yorston-Wellcome, for whom Lady Carolyn's Pub is named, will be fondly remembered for her decades of support as a generous Globe patron, Board member emerita, Gala chair, founder of the Craig Noel Legacy Society, and *joie de vivre* of the theatre. One of Carolyn's joys was hosting friends and family at pre-show picnics on the Globe's Stephen and Mary Birch Pavilion. She loved The Old Globe, and we will forever miss our Lady Carolyn.

"Parting is such sweet sorrow
that I shall say goodnight till
it be morrow."

—*Romeo and Juliet*

EXTRAORDINARY LEADERSHIP

Since the founding of The Old Globe in 1935, heroic leadership has made the theatre a cultural icon in San Diego and a leader in the American theatre. The following individuals and organizations, recognized for their tremendous cumulative giving, comprise a special group of friends who have played leading “behind-the-scenes” roles, helping to create productions on our three stages and our programs in the community.

— **\$25 million and higher** —
The Theodor and
Audrey Geisel Fund
Donald* and Darlene Shiley

— **\$11 million and higher** —
Conrad Prebys*
City of San Diego Commission for
Arts and Culture

— **\$9 million and higher** —
Karen and Donald Cohn

— **\$8 million and higher** —
Sheryl and Harvey White

— **\$7 million and higher** —
Kathryn Hattox*
Viterbi Family and The Erna Finci
Viterbi Artistic Director Fund

— **\$4 million and higher** —
The James Irvine Foundation
Paula and Brian Powers
The Shubert Foundation

— **\$3 million and higher** —
David C. Copley Foundation
County of San Diego

— **\$1 million and higher** —
Mary Beth Adderley
Terry Atkinson and Kathy Taylor
Bank of America

Bentivoglio Family Fund
Diane and John Berol
Stephen and Mary Birch
Foundation, Inc.
California Cultural
& Historical Endowment
J. Dallas and Mary Clark*

Joseph Cohen and Martha Farish
Peter Cooper and Erik Matwijkow
Valerie and Harry Cooper
Elaine and Dave* Darwin
Ann Davies

Una Davis and Jack McGrory
Silvija and Brian Devine
Helen Edison*
Pamela Farr and Buford
Alexander
Globe Guilders

Joan and Irwin Jacobs
The Kresge Foundation
The Lipinsky Family
Estate of Beatrice Lynds*
National Endowment for the Arts
Victor H.* and Jane Ottenstein
Price Philanthropies Foundation
Estate of Dorothy S. Prough*

Qualcomm
Jeannie and Arthur Rivkin
Jean and Gary Shekhter
Karen and Stuart Tanz
Theatre Forward
Gillian and Tony Thornley
Wells Fargo
Carolyn Yorston-Wellcome*
Vicki and Carl Zeiger
Anonymous (1)

*In memoriam

PUBLIC SUPPORT



The California Office of the Small Business Advocate

Financial support is provided by The City of San Diego.

THEATRE FORWARD

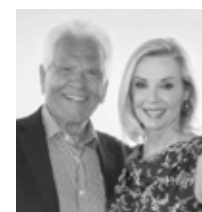
Theatre Forward advances the American theatre and its communities by providing funding and other resources to the country's leading not-for-profit theatres. A full list of funders can be found at TheOldGlobe.org/Theatre-Forward.

The Old Globe is deeply grateful to our Artistic Angels and Benefactors, whose vital support of the Annual Fund helps us make theatre matter to more people. For additional information on how to support the Globe at these extraordinary levels, please contact Llewellyn Crain at (619) 684-4141 or lcrain@TheOldGlobe.org.

Artistic Angels (\$200,000 and higher annually)



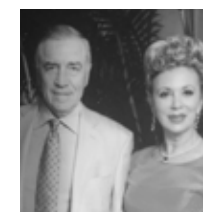
TERRY ATKINSON
AND KATHY TAYLOR



KAREN AND
DONALD COHN†



PAULA AND BRIAN
POWERS



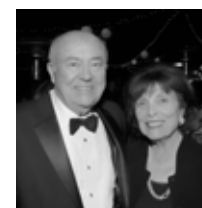
JEAN AND GARY
SHEKHTER



DARLENE MARCOS
SHILEY†
In memory of Donald Shiley



THE THEODOR AND
AUDREY GEISEL FUND



THE ERNA FINCI VITERBI
ARTISTIC DIRECTOR FUND
In memory of Erna Finci Viterbi

BENTIVOGLIO
FAMILY FUND

KATHRYN HATTOX
CHARITABLE TRUST

THE ESTATE OF
JEFFREY E. WHITE

ANONYMOUS

THE CONRAD PREBYS FOUNDATION



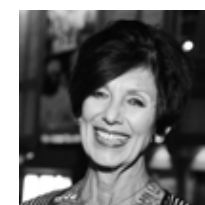
Benefactors (\$100,000 to \$199,999)



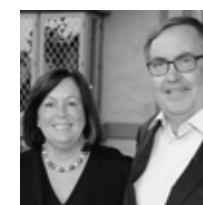
DIANE AND
JOHN BEROL



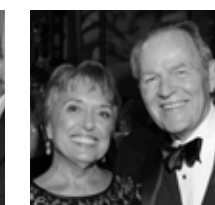
ELAINE AND
DAVE* DARWIN



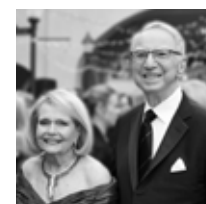
ANN DAVIES



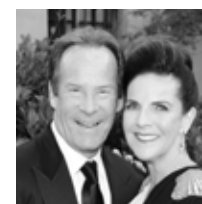
PAMELA FARR AND
BUFORD ALEXANDER



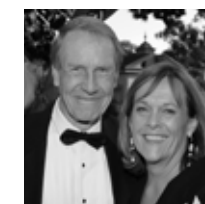
HAL AND PAM FUSON



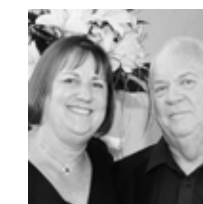
JOAN AND IRWIN JACOBS
FUND OF THE JEWISH
COMMUNITY
FOUNDATION



KAREN AND
STUART TANZ



GILLIAN AND TONY
THORNLEY



PAMELA J. WAGNER
AND HANS TEGEBO



SHERYL AND HARVEY
WHITE FOUNDATION



VICKI AND
CARL ZEIGER

IN MEMORY OF
ANNETTE AND
DICK FORD

THE ESTATE OF
MICKEY STERN



ANONYMOUS (2)

See the Globe's government supporters on page 14 and corporate supporters on page 17.

†Charter Sponsor since 1995

Photo for Diane and John Berol: Robert Sean Leonard, *King Richard II*, 2017. Photo by Jim Cox.

CORPORATE DONORS

Artistic Angels

(\$200,000 and higher annually)



Benefactors

(\$100,000 to \$199,999)



Ovation Circle

(\$60,000 to \$99,999)



Producer Circle (\$30,000 to \$59,999)



Artist Circle (\$25,000 to \$29,999)



Director Circle (\$10,000 to \$24,999)



Founder Circle (\$5,000 to \$9,999)

Edward Jones
Kuhn & Koviak CPAs, Inc.
MG Properties Group
Modern Times
Nordson Corporation
Foundation

Procopio, Cory,
Hargreaves & Savitch LLP
RAHD Group
Sycuan Band of the
Kumeyaay Nation
West CPM, Inc.

Craig Noel Circle (\$3,000 to \$4,999)

Catering Solutions
NWB Imaging, LLC
Ranch & Coast Magazine
TravelStruck
The Westgate Hotel

Champions (\$1,000 to \$2,999)

Chicago Title
Company

Cox
Communications

Handel's Ice Cream

La Jolla Kiwanis
Foundation

Louis Vuitton

Northern Trust Bank

RKG Wealth Management

Anonymous (1)

Become a Corporate Partner of The Old Globe. Contact Kristina Keeler at (619) 684-4140 or kkeeler@TheOldGlobe.org.

ANNUAL FUND DONORS

In order to make theatre matter in the lives of more people, The Old Globe—a not-for-profit theatre—relies on the support of our community. We thank our Circle Patrons and Friends of The Old Globe members for these generous annual fund gifts that help us deliver great theatre and life-changing arts engagement programs.

Artistic Angels (\$200,000 and higher annually)

Terry Atkinson and
Kathy Taylor
California Department
of Corrections and
Rehabilitation
The City of San Diego
Commission for Arts
and Culture

Karen and Donald Cohn ♥
Elaine and Dave* Darwin
Kathryn Hattox
Charitable Trust
HM Electronics, Inc.
Paula and Brian Powers ♥
The Conrad Prebys Foundation
Jean and Gary Shekhter ♥

Darlene Marcos Shiley,
in memory of Donald Shiley
The Shubert Foundation
The Estate of Ann Steck
and Family
The Theodor and
Audrey Geisel Fund

The Erna Finci Viterbi Artistic
Director Fund ♥
The Estate of Jeffrey E. White
Univision San Diego
Anonymous

Benefactors (\$100,000 to \$199,999)

Diane and John Berol
Ann Davies ♥
Pamela Farr and
Buford Alexander ♥
In memory of Annette
and Dick Ford
Hal and Pam Fuson ♥

Globe Guilders
Joan and Irwin Jacobs Fund
of the Jewish Community
Foundation
Price Philanthropies
Foundation
Qualcomm

The Estate of Mickey Stern
Karen and Stuart Tanz ♥
Gillian and Tony Thornley
Pamela J. Wagner
and Hans Tegebo
Sheryl and Harvey
White Foundation

Vicki and Carl Zeiger ♥
Anonymous (2)

Ovation Circle (\$60,000 to \$99,999)

California Arts Council,
A State Agency
Nikki and Ben Clay ♥
The Joseph Cohen and
Martha Farish New Play
Development Fund

Elizabeth Cushman ♥
Mr. and Mrs.
Brian K. Devine ♥
Laurents / Hatcher
Foundation
Kalpana and James Rhodes

Sue and Edward "Duff"
Sanderson
The Shen Family Foundation
Dee E. Silver, M.D.
Theatre Forward
United

Brent Woods and
Laurie Mitchell

Producer Circle (\$30,000 to \$59,999)

Jules and Michele Arthur ♥
The Belenzon Family in
memory of Irvin and
Ruth Belenzon
The Binford Family Δ
Dee Anne and Michael Canepa
Ric and Eleanor Charlton
Ellise and Michael Coit
Peter Cooper and
Erik Matwijkow

County of San Diego
Nina and Robert Doede
Richard and
Jennifer Greenfield
George C. Guerra Δ
The Kathy Hattox Designated
Endowment Fund at the
San Diego Foundation
Daphne H. and
James D. Jameson

The Estate of
Marilyn Rogers Kneeland
Las Patronas
Sandy and Arthur* Levinson
Jeffrey and Sheila Lipinsky
Family Foundation
The Lodge at Torrey Pines
Lolly & Duck
Sempra
Evelyn Mack Truitt

U.S. Bank
Viasat
Reneé and Bob Wailes
Wilkinson Family
Charitable Fund
June E. Yoder Family
Anonymous (3)

Artist Circle (\$25,000 to \$29,999)

The Blanche and
Irving Laurie Foundation
California Bank & Trust
California's Office of the
Small Business Advocate
City National Bank
Una Davis and Jack McGrory

Hervey Family Non-
Endowment Fund at
The San Diego Foundation
Gail and Doug Hutcheson Δ
Peggy and Robert Matthews
Foundation

Patrons of the Prado
Irwin and Maryanne Pfister
Tom and Lisa Pierce Δ
The Allison and Robert Price
Family Foundation
The Sapp Family Fund at the
Rancho Santa Fe Foundation

Mandell Weiss
Charitable Trust
Dr. Steve and Lynne Wheeler Δ

OUR THANKS

Director Circle (\$10,000 to \$24,999)

Maggie Acosta and Larry Shushan Alicia and Jonathan AtunΔ Jan and Rich Baldwin Bank of America Melissa Garfield Bartell and Michael Bartell Joan and Jeremy Berg The Bjorg FamilyΔ The Browar Family Fund of the Jewish Community Foundation George and Karen Bullette Alice and YT Chen, The Chenzyme Foundation Dale Connelly and Donna Van EkerenΔ Carlo and Nadine Daleo George Davis ♥ Frederik and Irene DefescheΔ Marguerite Jackson Dill, in memory of George Dill ♥ Edgerton Foundation Bernard J. Eggertsen and Florence Nemkov* The Estate of Mr. and Mrs. Robert M. (Bea) Epsten Dan and Phyllis EpsteinΔ Carol Spielman-Ewan and Joel Ewan Susanna and Michael Flaster Elaine Galinson and Herb SolomonΔ	Cam and Wanda Garner Drs. Tom and Jane GawronskiΔ Carol L. Githens Kimberly Godwin and Tom Wilcox Julia Carrington HallΔ Deborah A. and David A. HawkinsΔ Nishma and John Held ♥ Laurie Sefton HensonΔ Higgs Fletcher & Mack, LLP Teresa and Harry Hixson, Jr. Susan and Bill Hoehn John and Sally Hood Family FoundationΔ HoyleCohen, LLC Hyatt Regency La Jolla at Aventine Drs. Sonia and Andy* IsraelΔ Hal and Debby Jacobs Deni Jacobs and James Hammermeister Jerri-Ann and Gary Jacobs Robert Kilian, in memory of Kathleen M. SlaytonΔ Jo Ann Kilty Brooke and Dan Koehler Bob* and Laura Kyle ♥ Dr. William and Evelyn Lamden Peter and Michelle Landin	Carol Ann and George W. Lattimer Benjamin and Kimberly Lee Pamela Hamilton Lester in memory of Jim Lester Marshall Littman Susan and John Major Marsh & McLennan Agency The Estate of Madeline McGowan Don and Judy McMorrow ♥ Judith Morgan Geri Musser National Endowment for the Arts Neiman Marcus San Diego Darrell Netherton and Robert Wheeler Caroline and Nicolas Nierenberg Polly and Greg Noel Nordstrom The Kenneth T. and Eileen L. Norris Foundation Jerry and Phyllis Olefsky Susan ParkerΔ David and Mary Ann Petree Peggy and Peter PreussΔ John and Marcia Price Family FoundationΔ ResMed Foundation Amy Roth	Ivor and Colette Carson Royston Fund Robert and Nancy SelanderΔ Stan Siegel Special Event Audio Services, Inc. Peter Stovin Bill and Diane StumphΔ Subaru of El CajonΔ Phillip and Gayle Tauber Rhona Thompson Debra Turner University of San Diego Richard and Ilene WachsmannΔ Chris and Pat WeilΔ The Kurt Weill Foundation For Music Wells Fargo James E. and Kathryn A. Whistler Fund at The San Diego Foundation The Wickline Family Karin Winner AC and Dorothy Wood Chester Yamaga and Jean Samuels ♥ Anonymous (1)Δ
---	---	---	--

Founder Circle (\$5,000 to \$9,999)

Lisa and Steve Altman • Karen and Jim Austin ♥ • David A. and Jill Wien Badger • Toni and Deron Bear • Marian Benassi • Gary and Barbara BlakeΔ • Robert Blanton and Ann Clark* • Elizabeth and Steven Bluhm • Dr. Herman and Irene Boschken • Bea and Bill Briggs • Robert and Pamela Brooks • Julia R. BrownΔ • Glenn and Jolie Buberl • Christian and Bridget Buckley ♥Δ • Dr. Stephanie Bulger • Robert Caplan and Carol Randolph • Harry and Sandra Carter ♥ • Greg and Loretta CassΔ • Carol and Jeff Chang ♥ • Vicki ColasurdoΔ • Cliff and Carolyn Colwell • Douglas Druley and Judee SedlerΔ • Chuck and Odette Ebersole • Edward Jones Financial Advisor, David S. Tam • Enberg Charitable Foundation • Arlene Esgate • Michael and Rocio Flynn • William and Eva Fox Foundation (administered by Theatre Communications Group) • Bill and Judy Garrett • Joyce GattasΔ • Dean J. Haas • Ms. Cheryl HaimsohnΔ • The Estate of Betsy Hamblin • Norm Hapke and Valerie Jacobs Hapke • Kate Herring • The Estate of Virginia Higgins Hawkins • The Estate of Alexa Hirsch • David Hitz • Thao and Jeff Hughes • David K. Jordan • Kerr Family Foundation • Webster B. and Helen W. KinnairdΔ • Curt and Nancy Koch • Kuhn & Koviak CPAs, Inc.Δ • Regina Kurtz, in loving memory of Al Isenberg • Jean* and David Laing ♥ • Ronald and Ruth W. Leonardi • Paul Levin and Joanna Hirst • Marcia A. MattsonΔ • Nevins and Margret McBride • Elizabeth and Edward McIntyre • Thomas and Randi McKenzieΔ • Paul and Maggie Meyer • MG Properties Group • Dr. Howard and Barbara Milstein • Modern Times Beer • Rebecca Moores • Morgan Stanley • Michael and Christine Pack • Bernard Paul and Maria Sardina • Barbara PetersenΔ • Christopher and Angela Petoda • Gale and James PetrieΔ • Procopio, Cory, Hargreaves & Savitch LLP • Joan and Richard Qualls • RAHD Group • Linda Rankin and Rodney Whitlow • Joseph and Sara Reisman Fund of the Jewish Community Foundation • Ann and Tim Rice • Jeannie and Arthur Rivkin • Nancy J. Robertson • Robert Rosenberg • Christine Rounsavell • Robert and Lisa Shaw • Lari Sheehan • Dave and Phyllis Snyder • Nancy and Alan Spector and Family • Peter and Frances Splinter • Ms. Jeanette Stevens • Sycuan Band of the Kumeyaay Nation • Brenda and Robert Tomaras • Greta and Stephen Treadgold • C. Anne Turhollow, in memory of Michael J. Perkins ♥ • Stanley and Anita Ulrich • Carol Vassiliadis • Carol and Larry Veit • The Vincent Family • Lian von Wantoch, in memory of Jordine and Harvey Von WantochΔ • The Estate of Elizabeth Walker • Wendy Waterman • Shirli Weiss and Sons • West CPM, Inc. • Marilyn J. Woods • Britt Zeller • Diane and Robert Zeps • Emma and Leo Zuckerman • Tatiana Zunshine and Miles Grant • Anonymous (5) ♥Δ

Craig Noel Circle (\$3,000 to \$4,999)

Mr. and Mrs. David C. Ailor ♥ • Drs. Gabriela and Michael Antos • Bobbie Ball • Jan Bart • Biffar Family • M. Joan Bishop, in memory of Harold O. McNeil, Esq. ♥ • Pat and Carol Bivens • Rebecca Blakely Brown • Richard and Eileen Brown • Anita Busquets and William Ladd • Peter and Joan CamanaΔ • Edward and Pamela Carnot ♥Δ • George* and Ellen Casey • Catering Solutions • Doris and Wayne Christopher • Jan and Tom Ciaraffo • Richard Clampitt and Rachel Hurst • Garett and Wendy Clark ♥ • Ms. Heidi Conlan/The Sahan Daywi Foundation • Richard and Stephanie Coutts • Jane Cowgill • Bryan Crail and Tim Reed • Gigi Cramer, in memory of Ed Cramer • Ronald D. Culbertson • Darlene G. Davies, in memory of Lowell Davies • Drs. Charles Davis and Kathryn Hollenbach • Angie DeCaro ♥ • Jim and Sally DittoΔ • Sally Dubois and Dan Porte • Chris Duke and Harriet KounavesΔ • Berit and Tom Durler • Virginia and Chris Eddy • Hilit and Barry EdelsteinΔ • Bill Eiffert and Leslie Hodge • Dieter Fischer/Dieter's Mercedes Service Inc. • Christopher Menkov and Jennifer Fisher in Memory of Elizabeth Meyer • Dr. Ben and Susan FrishbergΔ • Teresa George ♥ • Jarrod Gerardot and Joel Pasion • Arthur Getis and Roberta King • Norman and Patricia Gillespie • Wendy Gillespie • Robert Gleason and Marc Matys • Mr. William and Dr. Susan GlocknerΔ • Fred and Lisa GoldbergΔ • Cathryn Golden ♥ • Edry GootΔ • Charles Gyselbrecht and Eric Taylor • Thomas and Cristina Hahn ♥ • Guy and Laurie Halgren • Handel's Ice Cream • Pat and Rick Harmetz • Gordon and Phyllis HarrisΔ • Patrick Harrison and Eleanor Lynch ♥ • Richard and Linda Hascup • Bill and Nancy Homeyer ♥ • Dana Hosseini and Stacie YoungΔ • Gary and Carrie Huckell • Dea and Osborn Hurston • The Jasada Foundation • Johnson Family Foundation • Jerry* and Marge Katleman • Edythe Kenton • Ken and Sheryl King • John Kirby and Anthony Toia • Jane and Ray* Klofkorn ♥ • Bill and Linda Kolb ♥ • Drs. Janice and Matt Kurth • James and Janice LaGrone ♥ • Verónica and Miguel Leff • Terry and Mary Lehr • The Leist Family ♥ • Jeffrey and Hillary Liber Fund of the Jewish Community Foundation • Robin J. Lipman ♥ • Robin B. LubyΔ • Neal and Heike Maglaque • Sally and Luis Maizel • Jackie and Charlie Mann Fund of the Jewish Community Foundation • Dr. Ted and Marcy Mazer • Dennis A. McConnell • Oliver McElroy and Karen DeLaurier • Dr.* and Mrs. M. Joseph McGreevy • Diane McKernan and Steve LymanΔ • Judi Menzel ♥ • Dean and Sue Mills • Ilene Mittman • Akiko Charlene Morimoto and Hubert Frank Hamilton, Jr. • Nancy and James Mullen • Elspeth and Jim Myer • Joyce Nash • Lyn Nelson • Mark C. Niblack, M.D. ♥ • Noelle Norton and Erwin Willis ♥Δ • NWB Imaging, LLC. • Micki Olin and Reid Abrams • Mr. and Mrs. Thomas C. Pastore • L. Robert and Patricia Payne • Anita Pittman • Col.* and Mrs. Ben Pollard • Dr. Julie A. Prazich and Dr. Sara Rosenthal • Ranch & Coast Magazine • Christine Hargrove Roberts • Julie and Jay Sarno • Jackie SchoellΔ • In memory of Axel • Richard Shapiro and Marsha Janger • Timothy J. ShieldsΔ • Drs. Joseph and Gloria Shurman • Mark and Katherine Silver • Alan and Esther Siman • Susan and Gerald SlavetΔ • Kathleen and Al Steele ♥ • Nancy Steinhart and Rebecca Goodpasture ♥ • Bob* and Mike Stivers • Louise and Jack Strecker ♥ • Deborah Szekely • Karen and Don Tartre ♥ • The Westgate Hotel • Tim and Judy Tillyer • Doris Trauner and Richard Stanford • TravelStruck • Suzanne Poet Turner and Michael T. Turner ♥ • Susan and Larry Twomey ♥ • Donald and Kathryn Vaughn • Peggy Ann Wallace • Sue and Bill Weber • Judith WenkerΔ • J.D. and Linda WesslingΔ • Catherine and Frank White • Stephen, Julia and Kendra Willey • Diana (DJ) Barliant and Nowell Wisch Endowment Fund of the Jewish Community Foundation • Alex Yañez and Brent Garcia • Charlie Zieky and Bob Berman • Anonymous (11) ♥Δ

Starting in 2022, Friends of the Globe donors will be recognized for their total giving from the preceding fiscal year. Your giving in 2022 will thus be recognized in 2023.

Champion (\$1,000 to \$2,999)

Dede AlpertΔ • Diana and Don Ambrose • In loving memory of Stanley E. AndersonΔ • Mrs. Cyla Andrus and Mr. Darrell Mead • Lynell AntrimΔ • Jeff and Donna Applestein • Helen Ashley • Toni Atkins and Jennifer LeSar • Katherine Austin • Judith Bachner and Eric Lasley • Dr. Stephen Miller BairdΔ • Helene BeckΔ • Nell Benjamin and Laurence O'Keefe • Sondra and Robert Berk Fund of the Jewish Community Foundation • Edgar and Julie BernerΔ • Sally and John Berry • Giovanni and Carolyn BertussiΔ • Mary Ann Beyster • Norma and Craig Blakey • Robert Blanchard and Lynda Forsha • Robert S. Boltax, M.D.Δ • Rich and Beth Brenner • John Burns and Dr. CC Cameron • Rael del Calori and The Backman FamilyΔ • Cappetta Family Foundation • Chicago Title Company • Janet and Maarten ChrispeelsΔ • Katharine Cline and Michael Lee • Marge Cole • Pamela Cooper • Miguel CordobaΔ • Cox CommunicationsΔ • Patricia David • Mike and Heather DietschΔ • Donna DonatiΔ • Stephen and Sandra Dorros • Jacqueline and Stanley DroschΔ • John* and Barbara EdgingtonΔ • Joanne Morrison Ehly • James and Ann Marie Elliff • David ElmerΔ • Arthur Engel • Walt Fidler • Monica Fimbres • Forsyth Leonard Fund of the Rancho San Diego Foundation • Jean and Sid* Fox • John and Natalie Fulton • Donna and Jack Galloway • Cheryl and Steven GarfinΔ • Harriet GerzaΔ • Doug Gillingham and Dana Friehauf • Geraldo and Scarrain Gomes Fund • Louise and Doug Goodman • Gayle and Dwight Gordon • William and Natalie Gore • Euvoughn GreenanΔ • Casey and Maybritt Haeling • Handel's Ice Cream • Kevin HarveyΔ • Salah HassaneinΔ • Mary Haviland • Allan Heider and Jennifer Jett • Brent and Dina HelbigΔ • Phil and Kathy Henry • Jamie Henson and Robert Houskeeper • Suzanne HessΔ • Ken and Shirley Hinkley • Peggy and John Holl • Rodney and Robyn Hood • Bruce and Jane Hopkins • Martin and Susan Hupka • Stephanie and Carl HurstΔ • Ikizyan Family • Joe and Phyl IronworksΔ • Christie Iverson • Nancy Janus • Dr. Jim Jaranson Fund of The Minneapolis Foundation • Jay Jeffcoat • Janis Jones • Kenneth and Marilyn Jones • Angela and Matthew KilmanΔ • Oskar and Judith Kirsten • Robert P. Kull and Jo Ann Curcia-KullΔ • La Jolla Kiwanis Foundation • Lisa LambertΔ • Joon Lee • Marshall and Judy LewisΔ • Friends and Family of Michael Reynolds • Louis Vuitton • Jennifer Luce • Jain Malkin • Jasna Markovac and Gary Miller • Kelly MartinezΔ • Eileen A. MasonΔ • Joan McAfee • Robert McCommins • Ron McMillan • Robert and Leslie Mercado • Mike Merrill and Pamela Maudsley-Merrill • Nathan Meyers and Vicki Righettini • Trevor and Teresa Mihalik • Rena Minisi and Rich PaulΔ • Ursula and Hans Moede • Martha and Chuck MoffettΔ • Chuck and Angela Mol • Thomas MooreΔ • Charles and Susan MuhaΔ • Dr. and Mrs. Stephen MunzingerΔ • Mark Nash • Daryl Nees • Joan and Charles NeumannΔ • Ronald J. Newell • Michael and Linda Niggli • Mikki Nooney • Northern Trust Bank • Mary Norwood • Rich and June Nygaard • Thomas and Tanya

OUR THANKS

Champion (\$1,000 to \$2,999) *(continued)*

O'DonnellΔ • Kimberly and David Ohanian • Dianna OrthΔ • Dr. David and Elizabeth Ostrander • Christopher and Susan Pantaleoni • John and Diane Parks • Lori Partrick • Priya Patel • Sandra D. Barstow, in memory of Margaret Peninger • Robert and Esther Pock • Magdalena PulhamΔ • Kathleen and Cameron Jay Rains • Dianne and Bruce RametΔ • Catherine Rempel • Susan Reynolds and Allison Rossett • Vivian Reznik, M.D. and Andrew Ries, M.D. • Michael and Deborah Rider • RKG Wealth Management • Michael Robertson and Dale Johnston • Bingo and Gino RoncelliΔ • Steven RossΔ • Lynne and Glenn Rossman • Michael and Elisa Rott • Joy RottensteinΔ • Mary Ann Rowan and Drew Sprague • Robert Rubenstein and Marie Raftery • Dawn and Phil Rudolph • Galit Ryan • Denis and Kristine Salmon • Susan SaltΔ • Rich and Christy ScannellΔ • Sheryl and Bob Scarano • Rhonda and Scott Schmid • Kathy Schneider • David M. ScottΔ • Karen Sedgwick • Jennifer and Kenneth Sghia-HughesΔ • The Silver Family • Dr. Carol Harter and Mr. William SmithΔ • Steve Steinke • Lisa Striebing • Dan and Katie SullivanΔ • Miriam and Gene Summ • Clifford and Kay Sweet • John and Gail TauscherΔ • Anne Taylor • Thomas Templeton and Mary E. Erlenborn • Matt and Christine Thoene • Barry and Christine Tobias • Christine and Kent Trimble • Mike Tristani and David Urban • Natalie C. Venezia and Paul A. Sager • Karen Walker • The Ward Family Charitable Fund • The Samuel L. Westernman Foundation • Sandy Wichelecki and Suzanne Dukes • Carol Wilson • Cass Witkowski FamilyΔ • The Witz Family • Joseph and Mary Witztum • Robert and Deborah YoungΔ • Sandra and Peter Zarcades • Howard and Christy Zatkin • Helene and Allan Ziman Fund of the Jewish Community Foundation • Anonymous (15)Δ

Advocate (\$500 to \$999)

Margaret and Tony Acampora • John and Lisa Allen • Robin Allgren • Debra and Dave Alpert • Arleene Antin and Leonard Ozerkis • Tony and Kathy Arciero • Axel Coaching, LLC • John and Elizabeth BagbyΔ • Drs. Andrew Baird and Linda Hill • Ed Baize and Anna Giacconi • Mike Bannan • Sharon BeamerΔ • Steven Bertiz • Sheila Bhalla • Mary Anne Bixby • Joyce and Bob BlumbergΔ • Gaylyn BooneΔ • Deb and Brand Brickman • Marshall and Marilyn Brown • Beth Bruton • Steven BurgessΔ • Laurie Burgett • Christy and Whitney CarterΔ • Gavin and Grace Carter • Jean ChengΔ • Ms. Lisa Churchill and Dr. Susan Forsburg • Phillip Cole, M.D. and Christopher Morris • Will and Lisette ConnerΔ • Steve Kelly and Maryanne Cordahl • Dan Cornthwaite and Alexander DumasΔ • Ginny Corrente • Jerry and Leslie Coughlan • Charley and Barb CrewΔ • Royda Crosland • Emery and Georgia CumminsΔ • Sally Curran and Keith De CondeΔ • John and Michelle Dannecker • Linda Davies • Steve and Susan Davis • Charles DeemΔ • Caroline DeMar • Don and Julie DeMent • Keith and Anna DennellyΔ • Dean and Mrs. Michael H. DessentΔ • Hon. Vincent Di Figlia • Mary Dragoo • Lisa DuMolt • James and Renée Dean Dunford, MD • Bill Eadie • Gary and Rachel Edwards • Aileen and Dan Emer • Eric Emont and Barbara Snyder Emont • Nate and Margaret Englund • James and Louise Esposito • Elena Federzoni • Susan Fox • Judith and Dr. William Friedel • Catherine R. Friedman • David Garcia • Cameron and Rachel Glibert • Kelli Glover • Kathe GoldbergΔ • Pamela GoosbyΔ • Melvin Gregory and Carmel Myers • Ellen Gross • Robert Halleck and Della Janis • Ilse Hanning • Mark and Corrine Harvey • Robert Haskell • Tom and Lynn Hawkins • Kaaren HendersonΔ • Jill and Steve Herbold • Sarah and Chris Herr • Christine Hickman and Dennis RagenΔ • Sara Hickmann • Robert and Sabine Hildebrand • James and Cathy Hirsch • Michele and Xuan HoΔ • Dr. and Mrs. Geoffrey Hueter • Katherine Immerman • Joseph and Eileen InneckenΔ • Dr. Steven Jaeger and Joe Zilvinskis • Sylvia Johnson • Dan Jones • Simone Kanter • Barbara Karpinski • Harv and Louise KauffmanΔ • Mike and Carol Kearney • Wilfred Kearse and Lynne Champagne • Paul Kelly • Dr. Gerald and Barbara Kent • Joy and Jeff KirschΔ • Dorothy and Robert Knox • Michael and Cynthia Kohn • Betty and Dr. Leonard Kornreich • Dr. Marvin M. KrippsΔ • Guliz KuruogluΔ • Eleanor E. KussmanΔ • Dan and Maria Lai • Laura Landau • Bill and Tamara LascurainΔ • Alexis Lasheras • David and Sandra Lee • Bryan Levy and Eddie OrtizΔ • B. Leonard LevyΔ • Mary R. Limoges • Ron and Gaye Lingley • Eric and Lori Longstreet • Sande L. Hall and Kyle E. LovelΔ • Robert Lundy • in memory of Dr. David LynnΔ • Rob McDonald and Tad Bratten • Neil Malmquist • Mercy and Ron MandelbaumΔ • Chana and Frank Mannen • Julianne Markow • Scott Markus • Casey and Meridith Marquis • John Martin • Tim MasonΔ • Rev. Stephen J. Mather • Kevin and Carol McCarthy • Ronald McCaskill and Robyn RogersΔ • Douglas and Edie McCoyΔ • J. Allen and Emily McCutchanΔ • Larry McDonald and Clare White-McDonald • Robert McGowan and Susan JacobiΔ • Maggi McKerrow • Monica Medina ♥ • Jeanie and James Milliken • JR Morgan • Dr. Robert and Ms. Anne Morrison • Maria and Charles Nagy • Joseph Naylor and Yosuke Chikamoto • Marsha J. NetzerΔ • Trey and Carla Nolan • Barbara and David Noonan • William and Catherine Norcross • Lou Ochoa and Paige KerrΔ • Nancy Cannon-O'Connell • Linda and Larry Okmin • Ben Olson • Stephen and Judy O'Neill • Barbara L. ParryΔ • Alexandra Pearson and Paul Meschler • Kevin and Coreen Petti • Pat and Evelyn Phillips • Janette Piankoff • Lisa PluthΔ • Mr. and Mrs. Jon Pollock • Eve Pritchard • San Diego Project Heart Beat • Ellen QuigleyΔ • Adele Rabin • Gene and Taffin Ray • Sandra Redman • Leslie ReedΔ • The Regnery Family Trust • Terry and Janelle RhoderickΔ • Christy and Rich Riley • Patrick and Marti RittoΔ • Robert Roberto • Tom and Mary Roberts • Sheryl Rowling • Dr. Norman and Barbara Rozansky • Don and Cynthia Rushing • Terry J. SampiteΔ • Ida Sandico-Whitaker and Robert Whitaker • Robert J. Schott • Martin* and Connie SchroederΔ • Judith Persky and Joseph SchumanΔ • The Estate of Daniel Schwarz • Linda and Harold Scott • Tim and Luci Serlet • Natalie H. Service • Dr. Katharine Sheehan and Dr. Frederick WalkerΔ • Michele and John Shumate • Susan B. Shurin • Mitchell and Elizabeth SieglerΔ • Beverly and Howard Silldorf • Anne and Ronald Simon • Lupe Smith • Malcolm E. Smith • Elyse Sollerder • Norman and Judith Solomon • Marisa SorBello and Peter V. Czipott • John and Lynn Spafford • Bill and Barbara SperlingΔ • Shannon Spisak • Pam Stafford • Stanley Black & Decker • Stephen Strawbridge • Patricia StrombergΔ • Ronald and Susan Styn • Eric and Marian Suggs • Norm and Laura SwaugerΔ • Enrique Torres • Selma TorresΔ • Sandy TroyaΔ • James Turner and Lisa Stewart • Virginia L. UnanueΔ • Hannah Van Etten • Gladfred Viery • Aaron and Jennifer Wahl • John WalshΔ • Anne Walter • Ann W. Wang • Rex and Kathy WarburtonΔ • Ken and Susan Watson • Pam and Steve Wedel • Janis Wellberg • Diane Willian • Andrew and Carisa Wisniewski • Judith WolfΔ • Chuck and Curry WolfeΔ • Bonnie J. Wright • Mr. and Mrs.* C.E. Wylie/C.E. Wylie Construction Company • Brendan M. and Kaye I. WynneΔ • Earl and Judy Yager • Mary Ann Yaghdjian, MSREΔ • Helena YaoΔ • Anonymous (18)Δ

Fan (\$250 to \$499)

Charlene Abrahamson • Hon. Louise De Carl Adler • Karin Albright • Barbara AldersonΔ • Gene and Pat Alfaro • Jeff and Carmen Aliber • Mr. and Mrs. Richard Allison • Ron and Ann AlpertΔ • Sumeet Anand • Melvianne Andersen • Philip Anderson and Verónica Valdés Anderson • Tad AndersonΔ • Julie Aquino • Mr. Alexander S. Ardwin • Frank ArmijoΔ • J.M. Ascenzi, Ph.D. • Assaf Family Fund • Lynn and Connie Baer • Keena Edyn Baker • David and Judy Banks • Philip and Victoria BarhamΔ • Greg and Radka Bartholomew • Cheri Belcoe • Hon. Cathy Ann Bencivengo • BenMichel Family Fund of the Jewish Community Foundation • Drs. John and Karen BergerΔ • Jo A. Berman • Kevin Bertrand • Berumen Family • Ellen Beshears • Jabe and Frances Best • Alex Bierhuis • Perry S. Binder, M.D. • Charlotte Bird • Kimberlee Blake and Diana KogaΔ • Wickliffe and John BlasiΔ • Lisbeth BlumΔ • Gordon Boerner • Kay Faulconer Boger, Ed.DΔ • Mr. and Mrs. Peter Boland • Arthur Boothroyd and Carol Macker sieΔ • Abha Bosworth • MaryCatherine Bowell • Bill BowenΔ • James and Donna BowersoxΔ • Denise Bowman • Mary Jo Bowman • Helen M. Boyden • Carolyn Bragg • Carole Wilson and Robert BrandtΔ • Dr. Edward & Cherrisse Brantz • Bob and Maxine BraudeΔ • Gail Braverman • Julie BreherΔ • Mary Brewer • LaVerne and Blaine Briggs • Arthur Brisolar • Hilarey Findeisen and George Brown • Marilyn Creson BrownΔ • Patricia Brown • Terri Bryson • Mary Buehler • Stephen and Lisa BurchΔ • Clint and Susie Burdett • Ron BurnerΔ • Susan BuxbaumΔ • Renner FamilyΔ • Diane and David Canedo • Edmund and Gale CapparelliΔ • Michael Carlin and Sharon Fenner • Monique Caron and Luis Jarquin • LaVonne and Paul Cashman • Alexandria Cassatt • The Castelloe Family • Luis CastilloΔ • Jerry and Katie CawthorneΔ • Luc Cayet and Anne Marie Pleska • Stephen and Carol Center • Jill and Dr. Hank ChambersΔ • Gregory F. CharlesΔ • Young ChoΔ • Russ and Kathy ChristiansenΔ • Elizabeth Clark • Michael and Alexandra Cleveland • Teresa CooperΔ • James Coyne and Melanie Picconi • Edward Croft and Erica Alarcon • Kathleen Cudahy • Tiffany CuellarΔ • Ellie Cunningham • Nancy Cunningham • Richard and Lynn CusacΔ • Kelsey Dahlke • Karen A Daniels • Eduard and Catherine de los Rios • Dwain and Cathy DeetsΔ • Tenny Denton • Gautam Dey • Philip H. and Ruth W. Dickinson Family Fund at the San Diego Foundation • Charles and Patricia Dintrone • Richard and Colleen DoeringΔ • Mary DonnellyΔ • Walter W. Doren • Kristi Douglas • Magaly Drant • Adrienne DriskillΔ • Susan Dube • David Dufek and Annette Goff Dufek • Carol L. Dunbar • Dr. and Mrs. Jonathan Dunn • Dennis Emerling • Todd EnnekingΔ • Julia FaragΔ • Bill and Mary FarrellΔ • Clark and Patricia FernonΔ • Dr. Susan Ferraris • Dale FisherΔ • Paula Fitzgerald and Christopher Nielsen • Virginia Fleming • Amy and Stephen Forrest • Lydia and Jean Fox in memory of G. Sidney Fox • Robert and Stacey Foxworth • Linda and Reginald FrankΔ • Caroline Frederick • Dr. Richard & Randee Friedman • Ellen FujikawaΔ • Anne Fuller and Michael Sakarias • Mary FusonΔ • Craig and Meredith Garner • Robert and Angela Gascho • Caroline Geldard • Stacy Cromidas and Ruth Gilbert • Georgia GildermanΔ • Frank GladdenΔ • Marie GlassΔ • Don and Dale Goldman • Cathy Gonzales • Janet Gorrie • Jeff Goyette • Jason GrayΔ • William GreenΔ • Lydia GreinerΔ • Gary and Anne Grim • David A. Gubser in memory of Richard A. Lieboff • Ariela Gugenheim • Tom Guthrie and Greg TompkinsΔ • P.K. HaganΔ • Wayne and Mary HagerΔ • Charles and Carole Hair • Thomas Hall • Steve Hamilton • Jim and Julie Hardesty • Carolyn Harris • Debra HarrisΔ • James and Ruth Harris • John and Jill HastingsΔ • Alan and Pam HayΔ • Garry and Sharon Hays • Rachel HealdΔ • Susan and Joe Healy • Paul Hegyi • Barbara and Kirk Henry • Marilyn and Daniel HerdeΔ • Catherine HilemanΔ • Estate of Judith and Mandel HimelsteinΔ • Lara Hoefer Moir • Eric and Elizabeth Hofmeister • Michael and Jill Holmes • Victoria and George HoodΔ • Mark Hoose • Gurdon Hornor • Sunshine HortonΔ • Tom Horvath and Claudia Baranowski • Rob Howe • Sandra K. Piccillo • Forest and Betty Hudson • Jason Hums • Ron and Kim Hunt • Gayle Huyser • Summer Iverson • Earl J. JacksonΔ • Randy and Carrol Jackson • Craig and Kim Jacobs • Nora Taylor Jaffe • Ed and Linda Janon • Timothy and Barbara JenkinsΔ • Andrew and Edith Jirak • Paula JolleyΔ • Dr. and Mrs. Clyde* W. Jones • Sara JorissenΔ • Natasha Josefowitz, Ph.D. • Jasmin KaeserΔ • John and Marianne Kalina • Gilbert and Mary Lou KammererΔ • Alexa and Matthew Kaplan • Trina Kaplan • The Kath Family • Nan and Gery Katona • Edward and Jeri KeillerΔ • Julia Kelety • Doug KempfΔ • Dennis KernΔ • Kim Kleber • Jo Ann Knutson • Jeri Koltun • Beth Korkuch • Vlassi Kouris • Christel Krause • Dee and Niki KrutopΔ • Mr. and Mrs. Robert Kucinski • Lura Kulhavy • Andrea LadmerΔ • Andy Lang • Steve and Ginny LaSalaΔ • Marc Lawrence • Claude and Jean Le Tien • Kimberly LearyΔ • Carlos and Linda LeGerrette • Susan E. LernerΔ • Mindy LetourneauΔ • Beth Levine and Henry Arbaranel • Ira Levine • Natasha LevittΔ • Doug and Stephanie LewisΔ • Susan Lewis • Zita LiebermenschΔ • Jing Lin • Gary LinkΔ • The Loeb & Wilson FamilyΔ • Giulia LongoΔ • Michelle Longtin • Mark C. Lorenzo • Claudia Lowenstein • Dani Luster and Mark Schmitt • Janet and Jim MaddenΔ • Johnny MahΔ • Jeanne Maltese • Deborah and Fred Mandabach • Russell Mangerie • Patricia Manning • The Marin Family • Jeff Markel • Zi and Gene Marsh • Harold and Beverly Martyn • Martin and Joanne Marugg • Jessica Mazalewski • David McCall and William Cross • Christian and Melissa McChesneyΔ • Harry and Patty McDeanΔ • Ann McDonaldΔ • Christine McFadden • Mr. Stephen Wright and Ms. Shawn McFarlane • Paula and Douglas McGraineΔ • Cynthia McIntyre • Mike and Rosalyn McKinneyΔ • Melissa McVay • Mary MearnsΔ • Joseph J MeyerΔ • Laura MiddlebrookΔ • Andrea Migdal and Michael Tierney • Craig and Betsey Monsell • Bernie and Carolyn MorseΔ • Rafeal and Debora MunozΔ • Carola MurguiaΔ • Margaret E. Murphy • Jerome Nadler • Jan and Mark Newmark • Robert and Alice Niderost • Randy and Susan Nielsen • James and Kareen Novak • Julie Nydam • Chris and Mike O'Donnell • Virginia Oliver • Margaret Oman • Reuben Orona and Claire Cazares • Babette R. OrtizΔ • Barbara Oswalt • Beth OttΔ • Darlene Papano • Sally ParkerΔ • Gabriela ParraΔ • Virginia Patch • Tim and Leslie Paul • Amy and Dave Pavlicek • Dennis and Nan PennellΔ • Richard D. Perlman, M.D. • Margaret and James Pesavento • Frank PetersenΔ • Kathleen PinonΔ • Victoria and David Plettner-Saunders • Christopher PorterΔ • Mr. and Mrs. Jeffrey Posner • Barbara J. Pricola • Alex and Eileen PueΔ • Stephen Pultz and Kelly Jenkins-Pultz • Fred and Linda Radecki • Eve Raftery • Paula Rattigan • Jason ReddittΔ • Ron Reff and Barbara Pollack • June Rider • Ida Rigby • Arthur and Mary Robertson • Dr. and Mrs. Richard RobertsonΔ • Jodyne Roseman • Stuart RosenwasserΔ • David Rubin • Dr. Steven and Lisa Ruderman • Scott and Kimberly Rusnak • Jeffrey and Suzanne RussellΔ • Mr. and Mrs. Todd Ruth • George and Karen Sachs • Mark SadoffΔ • Donna Valerie • Lillian Schafer • Richard SchneiderΔ • Myron and Doreen SchonbrunΔ • John Seitman and Joan Irion • Tom Selgas and Jocelyne MarshallΔ • Alyssa Sepinwall and Steve Goldstein • Eva ShoreΔ • Richard and Eleanor Shorter • Allen and Julie Shumate • Lance Smith • Kathie Adams and Myke Smith • Abby Snyder • Paul and Margaret SpeckartΔ • Ann Spira • Dr. and Mrs. Bradley Spitz • John Paul Spring • Cheryl StandardΔ • Steve

Fan (\$250 to \$499) (continued)

StelmanΔ • Hilton and Deb Stemwedel • Marcia Kern and James Stern • Shauna StokesΔ • David and Hannah StoneΔ • Mary Lou StoneΔ • David and Janet Stormoen • Robert H. Street • Leslie H. Stupp • James Sutorius • Nancy SwansonΔ • Mrs. J. B. (Cruz) Swedelius • Diane Saikhon-Szekely • Darlene and Ernest TamayoΔ • Brian and Janet Taylor • Virginia Taylor • Judith ThomasΔ • Ed ThomasonΔ • Bill Tobin • Bill and Cindy TrepanierΔ • Laurel Trujillo and Dennis MacBainΔ • Todd and Susan Turner • Melinda Underkoffler • Edward Underwood • Melissa Usher • Lori Van Orden • Mary Vorhis Δ • Maj. and Mrs. J.B. Wallace • Nancy Ward • Jeannine WatkinsΔ • Theodore Weathers and Terry McEachern • Rosanne and Dean Weiman • Kevin and Robin Werner • Margaret West • Charles White • Leslie Wiegand • Rachelle WilkinsonΔ • Pamela Willis and Warren Shafer • Don WilsonΔ • Carey WinstonΔ • John* and Lenora Witt • Craig and Barbara Wolf • William F. and Norah D. Wolff • Karyn WomachΔ • Clarence R WoodsΔ • Kathy Woodworth and Allison Woodworth • Rich Wordes and Amy Hitchcock • Jon Wreschinsky • Bennett WrightΔ • Sabrina WrightΔ • Lynn Yahr • James and Suzy Yates • Cathy Young and Mary O'Tousa • Maria L. ZadoroznyΔ • Will Miller and Anna ZieglerΔ • Ellen and Jack Zyroff • Anonymous (51)Δ

Enthusiast (\$125 to \$249)

Theresa Acerro • Achievers • Kathleen Acosta • The Adajar Family • Laura AdamsΔ • Preston and Siobhan Adams • Rajan Agarwal • James AlgertΔ • Jane Alshuler • Sandra and Earl Altshuler • Amazonsmile FoundationΔ • John D. Anderson • Tom AndersonΔ • Michael Ang • Loren ArcherΔ • Sandra Arkin • Tracey Ashcraft • Sally Bair • Steven Balch and Marcia Blackmon • Mark J. Ballam • Judith Bambace and Brian TrotierΔ • Renee Barnow • Elizabeth Barron • David and Katherine Barto • Linda Bauer • Michael and Catherine BeamerΔ • Tom Beattie* • Candace M BeckΔ • Richard and Sherry BeckhartΔ • Lynn BeckmanΔ • Katherine and Romeo BelarminoΔ • Terry Berenson • Orie Berezan • JB Bergeron • Judy Bergman • Jonathon Berman • Vanessa Bernal • Dusty and Lynn Bernard • Tom and Vicki Bernitt • Ron and Tracy BernsteinΔ • Steven Bernstein • Stefano Bertacchi • Shawna Biel • Terri Bignell • Anthea Billings • Marilyn Billingsley • Marianne Binkin • Judith Blue • Walter Bobbie • Stephen Bogardus • Richard Bolles • Joseph Bonanno • Peter and Sheree BonavichΔ • Piero and Paola BonissoneΔ • Angela Borgman • Beth Allison Borkenheim • Gillian Bossenger • Janis and Michael Brams • Matthew Braner • Elisabeth B. Braun • Lauraine Brekke-Esparza and Richard Esparza • Miriam and George Brewster • Juliette Brezin • Jeffrey and Ana Brinkerhoff • George and Johanna BrodyΔ • Ted Bromfield, Esq. • Susan Brooks • Catherine Brose • Gary and Susan Brown • Heidi Brown • Bonnie and Roger Brown • Nancy Brownstein • Michael and Leslie Brumley • Emily Bruning • Douglas and Phyllis BrunsonΔ • Kyle Buchholz • Clark Burnett • Jane and Steve Butcher • Kevin A. Cahill • Mary Ann Calcott • Karen CaldwellΔ • Michael Angelo Camacho • Ron Cammarata • Kannika CampbellΔ • Patricia Cantrell • Lisa Caprara • Cheryl CardinalΔ • Andre CarlierΔ • Sigurd Lars Carlson • Jerry L. Carter • Mary CastagnolaΔ • Tim Castelli and Itzel PerezΔ • Daryl Catherwood • Kimberly Cee • Gary and Lynette Cederquist • Stephen Celniker in memory of Elsa Renee Celniker • Lisa Chaffin • Richard Chagnon • Clifford Chally • David F. Chavkin • Candice Cheeseman • Ellen Chodorow • Dianne Shaw ChrismanΔ • Patti Christensen and Richard WeaverΔ • James & Kim Chung • Patricia Clark • Ross and Kay Clark • Linda Coale • Bud Coffey • Eddie and Gayle Cohen • Barbara and Richard Cohen • Ann ColeΔ • Ken and Beth Coleman • Clare ColquittΔ • Charles H. Comfort, Jr. • R. Patrick and Sharon Connell • Johnny Coogan • Lyndol and Diana CookΔ • April Cordero • Rick Corlett • Marilyn Cornell • Ernesto and Jan Corte • Lois CostaΔ • Anthony and Elizabeth Court • Joseph and Susan CourtneyΔ • Thomas Courtney • Susan B. Cowell • Dianne Cowen • Marguerite CowlesΔ • Jim Cox and Tom Aubrey • Bill Crane • John Cross • Patricia and Robb Crowder • Dana Crowell • Michael and Rebecca Crowley • Duane and Lauren Crum • Tracy Cummings • Fred Cutler • Sandra Daley • Michael Dannan • Phyllis DavidsonΔ • Alice Davis • Cecile Davis • Paula Davis • Ron and Sandra Davison • Mary and Jim* Dawe • Jared and Razielle De La Cerda • Florence C. De Lucia • Paul and Nelly Dean • Richard and Diane DeBoltΔ • Lois DeKock • Gerald and Bozier Demaree • Susan DeRose • Corrado Di Pisa • Char WebsterΔ • Dan Diehr and Nancy Wilkins-Diehr • Stewart Dier • Thomas Difiore and Bridget MeckleyΔ • Ruth Disraeli • Judith Dolan • Mark H. Dold and Edgar McIntosh • Maryellen DombrowskiΔ • Christina DowneyΔ • Sylvie Drake Jurras • Dale A. Schwab • John Duddy • Michael Dunaway • Donna Duvall • Bill and Susan Ehlers • Marie Tartar and Steven Eilenberg • Richard Enchelmeyer • Mark Estes and Beth Wrenn-EstesΔ • Sally Etcheto • Joseph Faletti • Donald and Patricia Falkner • Gary Farber • Isabella Ferrera • Elizabeth Ferris • Mara Fielding • Jeannette Filippone • Gregory Finn • Yara FisherΔ • Deborah Y. Fitch • Edward and Cynthia Fleri • Ellie Flores • Shannon Foglia • Michael and Pamela Foley • Anne FordΔ • Eugene Fosnight and Rise Smith • Marie Fox and David NokesΔ • Betsy Frank and John KafkaΔ • Carina Chiang and Ross FrankΔ • Gerhard and Andrea Franz • Ken FrazierΔ • Jay and Mary Freeman • John Freese • Lydia Hilton and Todd Friedman • Denise Frisbee • Grant and Kathryn Frost • The Frye Family • R. and C. Fuhrman • Keith and Gail Fuller • Charles and Jeanne GahaganΔ • Sheila GahaganΔ • Ana Galicot • Lisa Galstian • Meg GarciaΔ • Anne Garrison • Steve and Janet Gaspari • Donald Gates • Elizabeth Gemberling and Bruce Gemberling • Gloria J. Genovese • Paul and Sandra Gerard • Josie Gerk • Partho Ghosh and Stephanie Mel • Judith Gibb • Caroline Gillen • J. M. Gillman • Charles and Nancy Girvin • Timi Gleason • Diana GleaveΔ • Robert GlennonΔ • Dr. and Mrs. Michael GoldbaumΔ • Anna Gontar • Brenda Goodell • Goren FamilyΔ • Vinutha Gowda • Carolyn Grant • Holly and Jerry Gray • Alvin and Gloria M. Green • Alan and Ilene Greenspan • John Greenwell • Robert Griffin and Margaret Tessier • Annabella GriffoΔ • Susan Groarke • Howard Groveman and Jacqueline Shiller-Groveman • Frederick Hahn and Lawrence Serna • Howard Haimsohn • Merrill Haimsohn • Dorothy Hairston • Adrianne Hakes, Ed.D. • Amy Hall • Christine Hall • Debra HallidayΔ • Robert HannaΔ • Vicki Harden • Allan Harjala • Reno and Leslie Harnish • Andrea HarrisΔ • Philip Harrison • Berta Harris-Sutro • James and Kathleen Harte • Jenny Hartman • Dave and Christine Hatch • Leigh Hatfield and Sandra Young • Erica HausheerΔ • Angela Hawkins • Georgia HayashiΔ • Christina Hazlewood • Paul and Marjorie HebertΔ • James and Anne Hemp • Ernestine HermanΔ • Stephen

Enthusiast (\$125 to \$249) (continued)

Heron • Robert and Brenda Hetherington • Robert HeylmunΔ • Thomas Hickey and Sharon Strite • Colby Hicks • Shirley A. Higgins • Mary Hildebrand • Beatrice Hines • William and Deborah HirschΔ • James Hodgdon and Ann MorganΔ • David and Theresa Hoiles • David and Corinne Hollings • Peter Holmes • Terry and Peter Holt • Randolph L. HomesΔ • Stephen and Katherine Hon • Ann Hou • Dan HowardΔ • Steven and Nancy HowardΔ • Frederick and Nancy Howden • Rudolf and Cheryl Hradecky • Sidney Anne Hudig • Elissa Huffstetler and Albert Velasquez • Jean HughesΔ • Andrew Hull • Timothy Ann HuntΔ • Wendy Hunter • Tate Hurvitz • Joseph and Donna HynesΔ • Rosario IannaconeΔ • Kathleen Ide and Charles CoughranΔ • Susan and Charlie Inot • Gabrielle M. Ivany • Rob and Liz Jackson • Yvette Jackson • Juanita JacobsonΔ • Barbara Jaffe • Judith James • Barbara Jania-Smith • David and Jeannie Janssen • Ebon Johnson • Kent and Barbara JohnsonΔ • Jeanette Selooover Johnson and R. Douglas Johnson • Robert and Mary Jones • Steven and Dory Kafoure • Price and Lyn KageyΔ • Mark Kalish • Norman Katz • Doug Katzenmeyer • Dan and Jennifer Kaufman • Jim and Gerrie Kay • Emily Kehlmeier • Bobby Keith, Jr. • Linda Keller • Alise Kellman • Dwight Kellogg • Michael and Patricia Kelly • Norman Kenney • JoAnne Kerschner • Bill Ketchie • Roxanne Kilbourne • Ratanak Kim • David King • Jackie KingΔ • Kimberly Irene King • Lucinda KingΔ • Tamara Kinsella • Alan and Judith KiralyΔ • Linda KiranΔ • Jill KirbyΔ • Marian KleinΔ • Duane and Lynn Knize • Jennifer Koopman • Spencer Koroly • Melissa Korte • Ellen Koutsky • Loretta Kramer • Marc Kramer • Bryna Kranzler • Heather Roma Kroll • Michael Krucky • Stephan and Kathleen Kuhn • Carolyn Kurle • Kimberly KuzmaΔ • Paul Laedlein • Jean LaFlamme • Thomas and Jo Lancaster • Vic and Mary LandaΔ • Elise Landais • Dr. Lloyd LaPlant Jr. • Paul and Mary Laskin • Robert and Suzanne Latko • Robert and Susan Laurence • Kit LavellΔ • Robert Lawrence • Kelli Lawrence • Robert Laymon • Keddi LeBlanc • Veronica Lee • Julie and Chris Leeuw • Ken Lehmann • Tod Leonard • Dr. Steven Levine and Linda Silverman Levine • Michael Levinson • Kathleen Lincoln • Vicki Lindblade • Mary Lou Lindegren • Marshall Lindsay • Kenneth Lindsey • Anne Lineback Seshadri • Phillip Linssen and Patty Ungar-Linssen • Donald Lipkis, M.D. and Arlene Pollard • José Luis and Jael Lisares • Michelle Liske • Paula Litchfield • Joel LivingstonΔ • Jaime and Sylvia Liwerant • Brian Lloyd and Sharyll Brown • Dr. Frances LobmanΔ • Kathy Lockridge • Abby London-Crawford • Andrew B. London • Diana Long • Helen Lopatinsky • Diane Lopez ReedΔ • Celia Lopez • Rodney and Linda Lowman • Helga Lupu • Lisa D. Luster • Daniel J. Luttrell • Janice Lysiak • Whitney MacDougall • Christine Maclean • Pamela Maher • Richard Manion • Sarah Mansfield • Susan RandersonΔ • Michael Markopoulos • Laura Marquez • Cathie Marsh • Sharon A. MarshallΔ • Christopher Martin • Marilyn and Gene MarxΔ • Philip A. Mascari • Raymond MastalishΔ • Gina Mattern • Kathryn Matthews • Robert Mazalewski • Kate McDevitt • Kay McElrath and Sue Weir • Heather McGehee • Jeffrey McGrew • Cristie C. McGuireΔ • William McGurk • Amy McHughΔ • Mary McKenzie • Julie McLaughlinΔ • Kathryn McLaughlin • Kirby Kendrick and Robert McLeod • Timothy McMullen-Sullivan • Erin and Scott McPherson • Gretchen McQuade • Roderick and Caroline Meade • Emma Melton • Rob Melton • Joanne Meredith • Stephen Meyer • Andrew and Kelly Michajlenko • Shabnam and Gopal MiglaniΔ • Michael and Mary Militello • Edward Miller • Karen Miller • Marcine Miller • Scott and Grace Miller • Herbert and Paulette Milley • Mary Beth MillikenΔ • Marlene Mills • John and Patricia MisnerΔ • Dr. Isaac and Mrs. Nancy Mizrahi • Kristen Mohamed • Rodney L. MollΔ • Jason MolnarΔ • Louise Moody • Richard Moore • Terry and Sandra Moore • Betsy Morgan • Christine Morgan • Elisabeth Morse • Mimi and Ernie Mortensen • Suzanee Moss-High • Jackson and Chris Muecke • William and Mary-Rose Mueller • Linda Mulcahy • Edgar MullenΔ • Hannah Murdoch • Timothy and Patricia MurphyΔ • Karen and Clay Myers-Bowman • Amy Nees • Charles and Claire Negus • Jennifer Nelson • Dr. and Mrs. Lawrence Nelson • Maria Nelson • Philip and Donna Newbold • Elizabeth Newlin • Elizabeth NewmanΔ • Kenneth and Lisbeth Newman • Laurie Nickchen • Paula Nicodemus • Linda Niles • Esther Northrup • Christine Northup • Elizabeth Nutting • Lisa Oakes • Kyomi and Patrick O'ConnorΔ • Joseph O'Donnell • Jim O'Grady • Jeanette A Ollivier • Ronald and Valerie Ontell • Max and Fredda Opalsky • Dave and Gigi Orr • Judith Ortega and Darlene WhorleyΔ • Lynda Osborn • Bonnie Packert • Cristian Page • Vidhya Pandi • David and Janet Parillo • Laura Parsky • Stephen Partain • Oren and Amy Patashnik • Debra PattersonΔ • Leslie Peariso • Karen Pearson • Janice and Bruce Peetz • Rene Pelkey • Stephanie Pellette • Walt and Janice Pennington • Penelope PerrymanΔ • Doug PetersonΔ • Jim and Carole PhillipsΔ • Alex and Grace PhippsΔ • Mel and Marlese Pinney • Michael and Rosalind Plishner • Ira and Joy Plummer • Peter and Jane Polgar • Cynthia Poole • Monica and Michael Posner • James and Cathy PotterΔ • Rose Sekulovich and Fred Powell • Patricia Powers • Theron and Patricia PrestonΔ • Catherine and Wynn PriceΔ • Philip R. PrydeΔ • Mr. and Mrs. Merlin Puck • Thomas R. Pugh • Dr. Jean Francois Pulvenis de Séigny • Sharyn and Ken Pyrz • Mike RadiΔ • Matt and Amber Reams • Steven Redman • Phil and Pam ReedΔ • Ann Regan • Louis and Nancy Regas • Lisa-Victoria Reid • Mr. and Mrs. W. RenickΔ • Paul and Donna Repp • Charles and Joyce RevlettΔ • Francisco ReynosoΔ • Darcy and Teri Rice • Patricia D. Rice • Mimi Richard • Kathryn K. RichmanΔ • Joe Risse • Sherry Ritchey • Connie and David RittichierΔ • Sen. Alan Robbins • Scott Roberts and Sarah Ormond • Paulette R. LeahyΔ • Thomas and Lezli Rogers • Lisa Rogers • Romero Family • Stephen and Susan Root • Alyssa Ross • Nancy Ross • Marcelle Rossman • Stacey RushworthΔ • Helen Sabo • Mary SafleyΔ • Michelle Sahagian • Luis Salmeron • Nicholas Sanders • Richard Satter • Marcus Schaer • David and Carla Scheidlinger • Barry Scher • Michele Schlecht • Schlossman Family • Paul and Kristen Schmidt • Jennifer Schneider • Theresa SchneiderΔ • Martin Schulman • Phyllis Schwartz • Frank Scotti and Toni DaviesΔ • Thomas Seguire • Charles and Patricia Sellers • Robert Semmer • Josh SenterΔ • Mike and Barbara Sentovich • Terry Senty • Gilda ServetterΔ • Venkat Sethuraman • Chet Sewell • Georgina and Lu ShamΔ • Susan Shank BarronΔ • Stephanie and Don Shapiro • Jon Shapiro/Ideal Entertainment • Robert Sheppard and Janis D'Assalenaux • Francena SherburneΔ • Stephanie Sides • Thomas SidesΔ • Debra SigalΔ • The Siglers • Annie FrustiΔ • Gigi and Bill SimmonsΔ • Janis SimonΔ • Deborah SimpsonΔ • Michael G. Simpson • Pete Sison • Lynn Skoczalas • Eric Smail and Monica Hodes-Smail • Gary Smith • Jeannette V. Smith • Julie Evan Smith • Kathy Smith • Linda Smith • Michael Smolock • Marion Snell • Robert and Linda SniderΔ • Michael and Martha Snyder • Scott Sobka • Larry SolomonΔ • Anne SperawΔ • Edward and Victoria SpilkinΔ • Marsha Spitzer and Mike NelsonΔ • John and Jane St. John • Carolyn and Gordon Stables • Alan and Eve StallΔ • Robert J. Stall, Jr.Δ •

Enthusiast (\$125 to \$249) (continued)

Cynthia M. Steckel • Lynn Steffner-Light • Dani Steinberg • Anne Steinberger • Emily and Tyler Stamets • Vicki Stemm • Deanna Stephens • Marina Sterling • Stevens Family • Sandra StevensΔ • Dr. Craig and Debbie Stevenson • Dan Steward • Carl and Denise Stewart • Denise Stich • James and Kathleen StivenΔ • Janis Stocks • Jill Stone • Linda Strause • Pat Sullivan • Marsha Sutton • Eric SwansonΔ • Tom and Valerie Szczotka • Karri TakeuchiΔ • Diane Takvorian • Denis TarakjianΔ • Irene Tate • Bonnie TaylorΔ • Kathy Taylor • Nancy J. Taylor • Mary A. Thiem • Eloise F. Thomas • Chuck and Sandra Thompson • Gail Thompson • Tonya Thompson • Mark Thomson • Beverley and Timothy TodaroΔ • Joyce ToftΔ • Maurice Tompkins • The Worlock Family • Michael and Glenda Torricelli • Glori and Terry Traeder • Clifford W. TreaisΔ • Cal and Lynda Tregger • Katherine Trivino • Judybeth Tropp • Susan and Richard Ulevitch • Thomas and Ann Underwood • Lisa Uribe and Valorie Miller • Seana Urquhart • Natalie Vaca • Damion Valletta • Dawn Van Boxtel • John and Joanne van Doorn • Jeanne VanderhoffΔ • Beri and Jennifer Varol • Jorge Vasquez • Sylvia Vecchione • Felice Verive • Glen and Lisa Vieira • Fran Viertel • Michie Vinje • Michael and Leigh Vizzier • Evan Wadell • Kurt and Pamela Wagner • Frank and Carol WaibelΔ • Bryan Walkowiak • John R. Wallace • Michelle Walther • Bonnie Ward • Wilma Ward • Thom and Candace Ward-McKinlay • John WarnerΔ • Thomas and Amanda WarnerΔ • Michael Wasilewski and Stephen Miller • Peter Wayson • Andrew Welch and Anne Thompson-Welch • Doug and Pamela Werner • Ervin and Laura Wheeler • Ellen J. WhiteΔ • Maria V. White • Shelley White • Alison Whitelaw • Kathleen Whitworth • William and Mindy Wilcox • Beverly Willey • Laura Williams • Susan Williams • Randy Willox • Jamie and Julie WillsΔ • Shana Wilson • Daniel Wojta • Mary Woo • Heather Wood • Richard C. Woodward and Elaine H. Woodward • Olga Worm • Brian Worthington • Paul and Valerie Wozniak • Joyce Wright • Jennifer Wu • Fusako Yokotobi • Nancy Younce • Ann L. ZahnerΔ • Leslie Zann • Peg Zenger • LeAnna Zevely • Elizabeth Ziegler • Sidney and Karen Zisook • Anonymous (56)Δ

*In memoriam

♥ Globe Sustainers: donors who have pledged multiyear gifts

Δ Supporters: donors who supported the Making Theatre Matter Campaign

This list is current as of March 1, 2022. We regret any omissions or errors.
Please contact Janet Myott at jmyott@TheOldGlobe.org to make a correction to this list.

HAPPY BIRTHDAY

ROBERTA “RANDY” TIDMORE

The Old Globe is delighted to wish Randy Tidmore a very happy 100th birthday! On March 19, 2022, Randy celebrated a century of life, and we are honored that she has spent many of those years with the Globe. We thank Randy for her decades of support as a patron, Globe Guild member, volunteer, and subscriber. Randy has never missed a play and always looks forward to opening nights and events. We wish her good health and happiness as she embarks on more adventures in her next 100 years!



“My dancing soul doth celebrate.” —*Richard II*



PATRON INFORMATION

TICKET SERVICES HOURS

Monday: Closed

Tuesday – Sunday: 12:00 noon – last curtain

PHONE (619) 23-GLOBE (234-5623)

FAX (619) 231-6752

EMAIL Tickets@TheOldGlobe.org or

Info@TheOldGlobe.org

WEBSITE www.TheOldGlobe.org

ADMINISTRATION HOURS

Monday – Friday: 9:00 a.m. – 5:00 p.m.

PHONE (619) 231-1941

RESTROOMS

Restrooms are located in the lower lobby of the Old Globe Theatre, in the lobby of the Sheryl and Harvey White Theatre, and adjacent to the Lowell Davies Festival Theatre.

ASSISTED LISTENING SYSTEM

For the convenience of our hard-of-hearing and hearing-impaired patrons, The Old Globe has an Assistive Listening System in all three theatres. A limited number of the lightweight headsets, as well as induction neck loops, may be obtained from the house manager prior to performances.

SEATING OF LATECOMERS

Although we understand parking is often at a premium, latecomers may be given alternative seating and will be seated at an appropriate interval.

YOUNG CHILDREN

Children under five years of age will not be admitted to performances. (Children age three and up are admitted to *Dr. Seuss's How the Grinch Stole Christmas!*)

LOST AND FOUND

If you have misplaced a personal item while at the theatre, please contact the Ticket Services Office or our Public Safety team as soon as possible. If we are unable to locate your item, we will happily take down your contact information and a description of the item and contact you if it is found. The Old Globe does not assume liability for items left behind on the premises.

LET'S ALL DO OUR PART!

We are proud that this program, as with all our programs year-round, is made with paper from wood in regrowth areas that are specially planted for use in the printing industry, making the process sustainable, renewable, and safe for our environment. As you exit the theatre, feel free to leave your gently used program on the program stand for future audiences to use. Or you can put it in any of the recycle bins in the lobby or on our plaza.

Barry Edelstein

Erna Finci Viterbi Artistic Director

ARTISTIC

Justin Waldman ·

Associate Artistic Director

Freedome Bradley-Ballentine ·

Associate Artistic Director

Kim Heil, Lamar Perry · Associate Producers

ARTS ENGAGEMENT

Freedome Bradley-Ballentine ·

Director of Arts Engagement

Katherine Harroff ·

Associate Director of Arts Engagement

Vietka Do, Lisel Gorell-Getz, Erika Phillips, Laura Zablit · Arts Engagement Programs Managers

Lisel Gorell-Getz · Education Coordinator

James Pillar · Program Associate

Juliana Gassol ·

Arts Engagement Operations Coordinator

Veronica Burgess, Desiree Clarke, Leticia De Anda, Randall Eames, Regina Fernandez, Gerardo Flores Tonella, Samantha Ginn, Kimberly King, Erika Malone, Bibi Mama, Niki Martinez, Jake Millgard, Tara Ricasa, Topher Rivera, Soroya Rowley, Catherine Hanna Schrock, Jersten Seralie, Gill Sotu, Miki Vale, Valeria Vega, Eric Weiman · Teaching Artists

FINANCE

Michelle Yeager · Director of Finance

Miranda Osguthorpe · Senior Accountant

Eugene Landsman · Payroll Administrator

Trish Guidi · Accountant

Lisa Sanger-Greshko ·

Accounts Payable/Payroll Assistant

GENERAL MANAGEMENT

Alexander Orbovich · General Manager

Alexandra Hisserich · Associate General Manager

Jeff Sims · Assistant General Manager

Grace Herzog · Interim General Management Coordinator

Andrea Fernández · COVID Compliance Officer

Carolyn Budd ·

Assistant to the Artistic and Managing Directors

Tim Cole · Receptionist

FACILITIES

Crescent Jakubs · Facilities Director

Johnny Kammerer · Custodial Supervisor

Beverly Boyd, Violanda Corona, Roberto Gonzalez, Bernard Holloway, Carolina Lopez de Orellana, Nancy C. Orellana Lopez, Jason McNabb, Carlos

Perez, Victor Quiroz, Vicente Ramos, Andrey Repetskiy, Brock Roser · Building Staff

INFORMATION TECHNOLOGY

Dean Yager · Information Technology Director

Justin Brown · Systems Administrator

Brittany Summers · Information Technology Assistant

FRONT OF HOUSE

Carlos Crespo · Front of House Manager

Maria Smith · Associate Front of House Manager

Samantha Beckhart, Janelle Conde,

Oliver de Luz, Karen Lefferts, Victoria Weller · House Managers

HELEN EDISON GIFT SHOP

Barbara Behling, Judy Martinez,

Joey Ramone Ugalde · Gift Shop Supervisors

LADY CAROLYN'S PUB

Patrice Aguayo · Pub Manager

Alexis Duran, Scott Fitzpatrick, Deborah Montes,

Rashad Williams · Pub Shift Supervisors

Marc Eddy, Alejandro Gutierrez, Hannah

Kistemaker, Daniela Montes, Ryan Ursiny · Pub Staff

PUBLIC SAFETY

Mike Orona · Public Safety Manager

Brandi Mahan · Public Safety Lead

Ethan Aguayo, Perla Aguilera, Vincent Bisazza,

Willie Caldwell, Shea Husted, Janet Larson, Leanna

Neely, Eleuterio Ramos, Andrew Vargas ·

Public Safety Team

HUMAN RESOURCES

Sandy Parde · Director of Human Resources

Bruna Duarte · Human Resources Generalist

MARKETING

Dave Henson ·

Director of Marketing and Communications

Patty Onagan Consulting · Public Relations Director

Mike Hausberg · Associate Director of Communications

Nina Garin · Associate Director of Marketing

Joyelle Cabato · Marketing Manager

Chanel Cook · Digital and Print Publications Designer

Eve Alita Childs · Marketing Associate

Lucia Serrano · Public Relations Associate

Katie Rodriguez · Marketing Assistant

SUBSCRIPTION SALES

Scott Cooke · Subscription Sales Manager

Catherine Andrews, Arthur Faro, Janet Kavin,

Ken Seper, Cassandra Shepard, Grant Walpole ·

Subscription Sales Representatives

TICKET SERVICES

Bob Coddington · Ticket Services Director

Marsi Bennion · Associate Ticket Services Director

Cristal Salow ·

Group Sales Manager/Ticket Services Associate

Kathy Fineman, Caryn Morgan, Matt Pequeno ·

Lead Ticket Services Representatives

Manuel Aguilar, Kari Archer, Hannah Frederick,

Kenny Gallanosa, Jessica Holbert, Caroline Hyatt,

Taylor Olson, Benjamin Singel ·

Ticket Services Representatives

NEW PLAYS AND DRAMATURGY

Danielle Mages Amato ·

Director of New Plays and Dramaturgy

PHILANTHROPY

Llewellyn Crain · Director of Philanthropy

Kristina Keeler · Deputy Director of Philanthropy

Sam Abney, Moneé Gardner ·

Associate Directors of Philanthropy, Individual Giving

Bridget Cantu Wear ·

Associate Director of Philanthropy, Legacy Giving

Janet Myott · Philanthropy Administrator

Kaitlin Heller · Senior Grant Writer

Juliana Choi · Grant Writer

Reggie Garcia · Donor Engagement Manager

Nathan Wetter · Donor Services Coordinator

Caren Dufour · Philanthropy Assistant

Jyothi Doughman · Interim Events Director

DONOR SERVICES

Corinne Bagnol, Michele Kemp, Barbara Lekes,

David Owen, Bianca Peña, Stephanie Reed,

Alexander Richards, Barry Rose, Laura Williamson ·

Suite Concierges

PRODUCTION

Robert Drake · Senior Producer

Benjamin Thoron · Production Manager

Leila Knox · Associate Production Manager

and Production Stage Manager

Debra Pratt Ballard · Producing Associate

Ron Cooling · Company Manager

Jennifer Watts · Associate Company Manager

Jerilyn Hammerstrom ·

Production Office Coordinator

TECHNICAL

Joe Powell · Technical Director

Todd Piedad, Lucas Skoug ·

Assistant Technical Directors

Carole Payette · Charge Scenic Artist

Eileen McCann · Resident Design Assistant

Diana Rendon · Scene Shop Buyer

Gillian Kelleher · Head Shop Carpenter

Brandon Resenbeck ·

Stage Carpenter/Head Rigger, Globe

Jason Chohon · Charge Carpenter, White

Greg Sowizdrzal, Chad Stanner ·

Automation Operators

Frank Almenar, Mihai Antonescu, Robin Barnett,

Patrick Breaugh, Preston Brown, Chris Chauvet,

Keri Ciesielski, Eric Conger, Matthew Geibe, Eddie

Hernandez, Sloan Holly, Max Johngren, Roger

Lane, Chris Rowe, Albert Rubidoux, Victor Salazar,

John Simmons, William Slaybaugh, Kenneth

Straight, Antonio Valenzuela, Evelyn Walker ·

Carpenters

Timothy J. Shields

Audrey S. Geisel Managing Director

W. Adam Bernard,

Torrey Hyman · Lead Scenic Artists

Jessica Amador, Hannah Murdoch · Scenic Artists

COSTUMES

Stacy Sutton · Costume Director

Charlotte Devaux Shields · Resident Design Associate

Anne Stoup · Assistant to the Costume Director

Katie Knox · Design Assistant/Shopper

Nicole Zausmer · Shopper

Regan McKay · Design Assistant

Erin Cass · Draper

Ingrid Helton, Marsha Kuligowski · Drapers/Tailors

Mary Jill Anderson ·

Costume Assistant/Fitter/Alterations

Allison McCann, Susan Sachs,

Abigail Zielke · Assistant Cutters

Laura Dillemoth-Kovak,

Waverly Strickland · Assistant Cutters/Stitchers

Nunzia Pecoraro, Heather Premo,

Veronica von Borstel · Stitchers

Kristin Womble · Craft Supervisor/Dyer/Painter

Anna Campbell, Sharon Granieri, Faith James,

Sadie Rosenberg · Craft Artisans

Alison Reyes · Wig and Makeup Supervisor

Megan Woodley ·

Assistant Wig and Makeup Supervisor

Beth Merriman · Wardrobe Supervisor

Kelly Marie Collett-Sarmiento ·

Wardrobe Crew Chief, Globe

Jazmine Choi · Lead Wig/Hair Runner, Globe

Chanel Mahoney · Wig/Hair Runner, Globe

Maggie Allen, Terrie Cassidy, Sunny Haines,

Stephanie Kwik · Wardrobe Crew, Globe

PROPERTIES

David Buess · Properties Director

Kristin Steva Campbell · Associate Properties Director

Savannah Moore · Properties Buyer

Rory Murphy · Head Properties Artisan

Jeff Rockey · Properties Artisan

Jacob Sampson · Prop Shop Foreperson

Kyle Melton · Lead Properties Carpenter

Suzi McDonnell · Head Properties, Globe

Richard Rossi · Stage and Properties Head, White

James Ramirez, Reef Randall · Properties Run Crew

LIGHTING

Stevie Agnew · Lighting Director

Stephanie Lasater · Assistant Lighting Director

Deanna Tretheway · Lighting Assistant

Ryan Osborn · Head Electrician, Globe

Michael Lowe · Head Electrician, White

Delaney McCown, Kevin Orlof · Follow Spot Operators

Michelle Aguilar, Hannah Beerfas, Nikki Bloom,

Brycen Peters, Joshua Heming, Victor Hernandez,

Xavier Luevano, Amber Montoya, Sandra Navarro,

Aaron Pavlica, Samuel Rodriguez, Robert Thoman,

Aiko Whitmore, Laura Zingle · Electricians

SOUND

Paul Peterson · Sound Director

Evan Eason · Assistant to the Sound Director

Colin Whitely · Head Sound Technician, Globe

Matt Lescault-Wood · Head Sound Technician, White

Brooke Rains · Deck Audio, Globe

Ron Sinko · Mixer, Globe

Rachel Eaves, Clayton Nicodemus, Zac Ordene,

Tanner Osborne, Argyle Stone, Tia Walker, Robbie

Welper · Sound Technicians

Jennifer Lopez · Audio Swing

PROFESSIONAL TRAINING

Jesse Perez ·

Director of Professional Training

Shana Wride · Program Coordinator

Danielle Mages Amato, Amanda Penaloza Banks,

Ray Chambers, Gerhard Gessner, Jan Gist, Ka'imi

Kuoha, Charles O'Malley, Orlando Pabotoy, Scott

Ripley, Jersten Seralie, Abraham Stoll, James

Vásquez, Emmellyn Thayer, Eileen Troberman,

Ralph Zito · M.E.A. Faculty

Jacob Bruce, Corey Johnston, Dana McNeal, Nate

Parde, Nicole Ries, Robin Sanford Roberts · M.E.A.

Production Staff

Jack O'Brien · Artistic Director Emeritus

Craig Noel · Founding Director